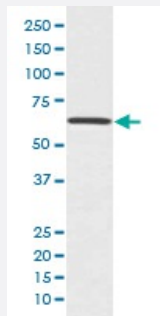


CDC42EP1 monoclonal antibody, clone IOE-3

Catalog # MAB19867 Size 100 uL

Applications



Western Blot (Cell lysate)

Western blot analysis of HUVEC cell lysate with CDC42EP1 monoclonal antibody.

Specification

Product Description	Rabbit monoclonal antibody raised against synthetic peptide of human CDC42EP1.
Immunogen	A synthetic peptide corresponding to human CDC42EP1.
Host	Rabbit
Reactivity	Human
Form	Liquid
Purification	Affinity purification
Isotype	IgG
Recommend Usage	Western Blot (1:500-1:2000) The optimal working dilution should be determined by the end user.
Storage Buffer	In PBS, pH 7.4, 150mM NaCl, 0.02% sodium azide and 50% glycerol.
Storage Instruction	Store at -20°C for one year. After reconstitution, at 4°C for one month. It can also be aliquotted and stored frozen at -20°C for a longer time. Avoid repeated freezing and thawing.

Note

This product contains sodium azide: a POISONOUS AND HAZARDOUS SUBSTANCE which should be handled by trained staff only.

Applications

- Western Blot (Cell lysate)

Western blot analysis of HUVEC cell lysate with CDC42EP1 monoclonal antibody.

Gene Info — CDC42EP1

Entrez GeneID [11135](#)

Protein Accession# [Q00587](#)

Gene Name CDC42EP1

Gene Alias BORG5, CEP1, MGC15316, MSE55

Gene Description CDC42 effector protein (Rho GTPase binding) 1

Omim ID [606084](#)

Gene Ontology [Hyperlink](#)

Gene Summary CDC42 is a member of the Rho GTPase family that regulates multiple cellular activities, including actin polymerization. The protein encoded by this gene is a CDC42 binding protein that mediates actin cytoskeleton reorganization at the plasma membrane. This protein is secreted and is primarily found in bone marrow. [provided by RefSeq]

Other Designations 55 kDa bone marrow stromal/endothelial cell protein|CDC42 effector protein 1|OTTHUMP00000028709|serum constituent protein