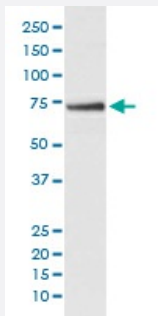


CDC16 monoclonal antibody, clone IOI-3

Catalog # MAB19858 Size 100 uL

Applications



Western Blot (Cell lysate)

Western blot analysis of HepG2 cell lysate with CDC16 monoclonal antibody.

Specification

Product Description Rabbit monoclonal antibody raised against synthetic peptide of human CDC16.

Immunogen A synthetic peptide corresponding to human CDC16.

Host Rabbit

Reactivity Human

Form Liquid

Purification Affinity purification

Isotype IgG

Recommend Usage
Immunocytochemistry (1:50-1:200)
Immunofluorescence (1:50-1:200)
Western Blot (1:500-1:2000)
The optimal working dilution should be determined by the end user.

Storage Buffer In PBS, pH 7.4, 150mM NaCl, 0.02% sodium azide and 50% glycerol.

Storage Instruction Store at -20°C for one year. After reconstitution, at 4°C for one month. It can also be aliquotted and stored frozen at -20°C for a longer time. Avoid repeated freezing and thawing.

Note

This product contains sodium azide: a POISONOUS AND HAZARDOUS SUBSTANCE which should be handled by trained staff only.

Applications

- Western Blot (Cell lysate)

Western blot analysis of HepG2 cell lysate with CDC16 monoclonal antibody.

- Immunocytochemistry

- Immunofluorescence

Gene Info — CDC16

Entrez GeneID [8881](#)

Protein Accession# [Q13042](#)

Gene Name CDC16

Gene Alias APC6

Gene Description cell division cycle 16 homolog (S. cerevisiae)

Omim ID [603461](#)

Gene Ontology [Hyperlink](#)

Gene Summary

This gene encodes a component protein of the APC complex, which is composed of eight proteins and functions as a protein ubiquitin ligase. The APC complex is a cyclin degradation system that governs exit from mitosis. Each component protein of the APC complex is highly conserved among eukaryotic organisms. This protein and two other APC complex proteins, CDC23 and CDC27, contain a tetratricopeptide repeat (TPR), a protein domain that may be involved in protein-protein interaction. Multiple alternatively spliced variants, encoding the same protein, have been identified. [provided by RefSeq]

Other Designations anaphase-promoting complex, subunit 6

Pathway

- [Cell cycle](#)

- [Ubiquitin mediated proteolysis](#)

Disease

- [Adenocarcinoma](#)
- [Genetic Predisposition to Disease](#)
- [Pancreatic Neoplasms](#)