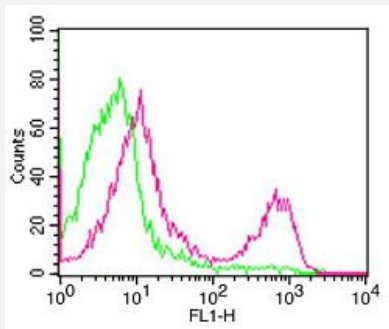


CD247 monoclonal antibody, clone IHI-3

Catalog # MAB19829 Size 100 uL

Applications



Flow Cytometry

Flow cytometric analysis of mouse CD247 in splenocytes using 0.5 ug/10⁶ cells. Green represents isotype control; red represents mouse CD247 antibody. Goat anti-hamster IgG FITC conjugate secondary antibody was used.

Specification

Product Description Rabbit monoclonal antibody raised against synthetic peptide of human CD247.

Immunogen A synthetic peptide corresponding to human CD247.

Host Rabbit

Reactivity Human, Mouse

Form Liquid

Purification Affinity purification

Isotype IgG

Recommend Usage
Flow Cytometry (1:20)
Immunocytochemistry (1:100-1:200)
Immunofluorescence (1:100-1:200)
The optimal working dilution should be determined by the end user.

Storage Buffer In PBS, pH 7.4, 150mM NaCl, 0.02% sodium azide and 50% glycerol.

Storage Instruction Store at -20°C for one year. After reconstitution, at 4°C for one month. It can also be aliquotted and stored frozen at -20°C for a longer time. Avoid repeated freezing and thawing.

Note

This product contains sodium azide: a POISONOUS AND HAZARDOUS SUBSTANCE which should be handled by trained staff only.

Applications

- Immunocytochemistry
- Immunofluorescence
- Flow Cytometry

Flow cytometric analysis of mouse CD247 in splenocytes using 0.5 ug/10⁶ cells. Green represents isotype control; red represents mouse CD247 antibody. Goat anti-hamster IgG FITC conjugate secondary antibody was used.

Gene Info — CD247

Entrez GeneID [919](#)

Protein Accession# [P20963](#)

Gene Name CD247

Gene Alias CD3-ZETA, CD3H, CD3Q, CD3Z, T3Z, TCRZ

Gene Description CD247 molecule

Omim ID [186780 610163](#)

Gene Ontology [Hyperlink](#)

Gene Summary The protein encoded by this gene is T-cell receptor zeta, which together with T-cell receptor alpha/beta and gamma/delta heterodimers, and with CD3-gamma, -delta and -epsilon, forms the T-cell receptor-CD3 complex. The zeta chain plays an important role in coupling antigen recognition to several intracellular signal-transduction pathways. Low expression of the antigen results in impaired immune response. Two alternatively spliced transcript variants encoding distinct isoforms have been found for this gene. [provided by RefSeq]

Other Designations CD247 antigen, zeta subunit|CD3Z antigen, zeta polypeptide (TiT3 complex)|OTTHUMP00000032544|T-cell antigen receptor complex, zeta subunit of CD3|T-cell receptor T3 zeta chain|T-cell receptor zeta chain|T-cell surface glycoprotein CD3 zeta chain

Pathway

- [Natural killer cell mediated cytotoxicity](#)

- [T cell receptor signaling pathway](#)

Disease

- [Arthritis](#)
- [Genetic Predisposition to Disease](#)
- [Hypertension](#)
- [Lupus Erythematosus](#)
- [Osteoporosis](#)
- [Scleroderma](#)