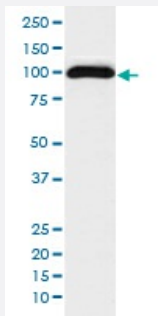


# CD276 monoclonal antibody, clone ABGB-3

Catalog # MAB19826      Size 100 uL

## Applications



### Western Blot (Cell lysate)

Western blot analysis of 293T cell lysate with CD276 monoclonal antibody.

## Specification

<b>Product Description</b>	Rabbit monoclonal antibody raised against synthetic peptide of human CD276.
<b>Immunogen</b>	A synthetic peptide corresponding to human CD276.
<b>Host</b>	Rabbit
<b>Reactivity</b>	Human
<b>Form</b>	Liquid
<b>Purification</b>	Affinity purification
<b>Isotype</b>	IgG
<b>Recommend Usage</b>	Flow Cytometry (1:200) Immunoprecipitation (1:50) The optimal working dilution should be determined by the end user.
<b>Storage Buffer</b>	In PBS, pH 7.4, 150mM NaCl, 0.02% sodium azide and 50% glycerol.
<b>Storage Instruction</b>	Store at -20°C for one year. After reconstitution, at 4°C for one month. It can also be aliquotted and stored frozen at -20°C for a longer time. Avoid repeated freezing and thawing.

**Note**

This product contains sodium azide: a POISONOUS AND HAZARDOUS SUBSTANCE which should be handled by trained staff only.

## Applications

- Western Blot (Cell lysate)

Western blot analysis of 293T cell lysate with CD276 monoclonal antibody.

- Immunoprecipitation

- Flow Cytometry

## Gene Info — CD276

Entrez GeneID	<a href="#">80381</a>
---------------	-----------------------

Protein Accession#	<a href="#">Q5ZPR3</a>
--------------------	------------------------

Gene Name	CD276
-----------	-------

Gene Alias	B7-H3, B7H3
------------	-------------

Gene Description	CD276 molecule
------------------	----------------

Omim ID	<a href="#">605715</a>
---------	------------------------

Gene Ontology	<a href="#">Hyperlink</a>
---------------	---------------------------

Gene Summary	Costimulatory B7 molecules (e.g., B7-1, or CD80; MIM 112203) signal through CD28 (MIM 186760) family molecules such as CD28, CTLA4 (MIM 123890), and ICOS (MIM 604558).[supplied by OMIM]
--------------	---

Other Designations	B7 homolog 3 CD276 antigen
--------------------	----------------------------

## Pathway

- [Cell adhesion molecules \(CAMs\)](#)