

ATF6 alpha monoclonal antibody, clone 37-1

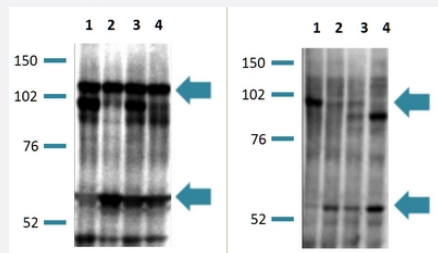
Catalog # MAB19823 Size 100 ug

Applications

Western Blot (Cell lysate)

(Right)

Western Blot analysis of human Hela cell extracts: Lane 1: untreated; Lane 2: DTT: 1mM dithiothreitol (reducing reagent) for 1 h; Lane 3: Tm: 2 g/ml tunicamycin (inhibitor of N-glycosylation) for 3 h; Lane 4: Tm: 2 g/ml tunicamycin (inhibitor of N-glycosylation) for 7 h with ATF6 alpha monoclonal antibody, clone 37-1 (Cat# MAB19823).



*The upper arrow denotes an unglycosylated form of pATF6 alpha (P); the bottom arrow denotes pATF6 alpha (N). ATF6 is constitutively expressed as pATF6 alpha (P) (~90kDa protein), and converted to pATF6 alpha (N) (>50-kDa protein) in ER-stressed cells.

(Left)

Western Blot analysis of mouse NIH3T3 cell extracts: Lane 1: untreated; Lane 2: DTT: 1mM dithiothreitol (reducing reagent) for 1 h; Lane 3: Tm: 2 g/ml tunicamycin (inhibitor of N-glycosylation) for 3 h; Lane 4: Tm: 2 g/ml tunicamycin (inhibitor of N-glycosylation) for 7 h with ATF6 alpha monoclonal antibody, clone 37-1 (Cat# MAB19823).

*The upper arrow denotes an unglycosylated form of pATF6 alpha (P); the bottom arrow denotes pATF6 alpha (N). ATF6 is constitutively expressed as pATF6 alpha (P) (~90kDa protein), and converted to pATF6 alpha (N) (>50-kDa protein) in ER-stressed cells.

Specification

Product Description

Mouse monoclonal antibody raised against recombinant human ATF6 alpha.

Sequence	Recombinant GST fusion protein corresponding to amino acids fragment at N-terminus of human ATF6 alpha.
Host	Mouse
Reactivity	Human, Mouse
Specificity	This antibody reacts to human and mouse ATF6 alpha.
Form	Liquid
Purification	Chromatography Method
Isotype	IgG1 kappa
Recommend Usage	Western Blot (1:500 - 1000) The optimal working dilution should be determined by the end user.
Storage Buffer	In PBS (50% glycerol).
Storage Instruction	Stored at -20°C. Aliquot to avoid repeated freezing and thawing.

Applications

● Western Blot (Cell lysate)

(Right)

Western Blot analysis of human Hela cell extracts: Lane 1: untreated; Lane 2: DTT: 1mM dithiothreitol (reducing reagent) for 1 h; Lane 3: Tm: 2 g/ml tunicamycin (inhibitor of N-glycosylation) for 3 h; Lane 4: Tm: 2 g/ml tunicamycin (inhibitor of N-glycosylation) for 7 h with ATF6 alpha monoclonal antibody, clone 37-1 (Cat# MAB19823).

*The upper arrow denotes an unglycosylated form of pATF6 alpha (P); the bottom arrow denotes pATF6 alpha (N). ATF6 is constitutively expressed as pATF6 alpha (P) (~90kDa protein), and converted to pATF6 alpha (N) (>50-kDa protein) in ER-stressed cells.

(Left)

Western Blot analysis of mouse NIH3T3 cell extracts: Lane 1: untreated; Lane 2: DTT: 1mM dithiothreitol (reducing reagent) for 1 h; Lane 3: Tm: 2 g/ml tunicamycin (inhibitor of N-glycosylation) for 3 h; Lane 4: Tm: 2 g/ml tunicamycin (inhibitor of N-glycosylation) for 7 h with ATF6 alpha monoclonal antibody, clone 37-1 (Cat# MAB19823).

*The upper arrow denotes an unglycosylated form of pATF6 alpha (P); the bottom arrow denotes pATF6 alpha (N). ATF6 is constitutively expressed as pATF6 alpha (P) (~90kDa protein), and converted to pATF6 alpha (N) (>50-kDa protein) in ER-stressed cells.

Gene Info — ATF6

Entrez GeneID	22926
Protein Accession#	P18850
Gene Name	ATF6
Gene Alias	ATF6A
Gene Description	activating transcription factor 6
Omim ID	605537
Gene Ontology	Hyperlink
Gene Summary	ATF6 is an endoplasmic reticulum (ER) stress-regulated transmembrane transcription factor that activates the transcription of ER molecules.[supplied by OMIM]
Other Designations	OTTHUMP00000025585 activating transcription factor 6 alpha

Disease

- [Cardiovascular Diseases](#)
- [Diabetes Mellitus](#)
- [Edema](#)
- [Genetic Predisposition to Disease](#)
- [Glucose Intolerance](#)
- [Hyperlipidemia](#)
- [Kidney Failure](#)
- [Prediabetic State](#)