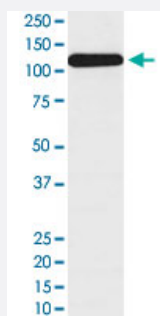


BUB1B monoclonal antibody, clone ABFG-2

Catalog # MAB19677 Size 100 uL

Applications



Western Blot (Cell lysate)

Western Blot analysis of HepG2 cell lysate with BUB1B monoclonal antibody, clone ABFG-2 (Cat # MAB19677).

Specification

Product Description	Rabbit monoclonal antibody raised against synthetic peptide of human BUB1B.
Immunogen	A synthetic peptide corresponding to human BUB1B.
Host	Rabbit
Theoretical MW (kDa)	119.545
Reactivity	Human
Form	Liquid
Purification	Affinity purification
Isotype	IgG
Recommend Usage	Flow Cytometry (1:50) Immunohistochemistry (Formalin/PFA-fixed paraffin-embedded sections) (1:50-1:200) Immunoprecipitation (1:30) Western Blot (1:1000-1:5000) The optimal working dilution should be determined by the end user.
Storage Buffer	In PBS, 150 mM NaCl, pH 7.4 (50% glycerol, 0.02% sodium azide).

Storage Instruction

Store at -20°C for one year. After reconstitution, at 4°C for one month. It can also be aliquotted and stored frozen at -20°C for a longer time. Avoid repeated freezing and thawing.

Note

This product contains sodium azide: a POISONOUS AND HAZARDOUS SUBSTANCE which should be handled by trained staff only.

Applications

- Western Blot (Cell lysate)

Western Blot analysis of HepG2 cell lysate with BUB1B monoclonal antibody, clone ABFG-2 (Cat # MAB19677).

- Immunohistochemistry (Formalin/PFA-fixed paraffin-embedded sections)

- Immunoprecipitation

- Flow Cytometry

Gene Info — BUB1B

Entrez GeneID[701](#)**Protein Accession#**[O60566](#)**Gene Name**

BUB1B

Gene Alias

BUB1beta, BUBR1, Bub1A, MAD3L, SSK1, hBUBR1

Gene Description

budding uninhibited by benzimidazoles 1 homolog beta (yeast)

Omim ID[114500 602860](#)**Gene Ontology**[Hyperlink](#)**Gene Summary**

This gene encodes a kinase involved in spindle checkpoint function. The protein has been localized to the kinetochore and plays a role in the inhibition of the anaphase-promoting complex/cyclosome (APC/C), delaying the onset of anaphase and ensuring proper chromosome segregation. Impaired spindle checkpoint function has been found in many forms of cancer. [provided by RefSeq]

Other Designations

BUB1 budding uninhibited by benzimidazoles 1 homolog beta|MAD3/BUB1-related protein kinase|budding uninhibited by benzimidazoles 1, beta

Pathway

- [Cell cycle](#)

Disease

- [Adenocarcinoma](#)
- [Breast cancer](#)
- [Breast Neoplasms](#)
- [Carcinoma](#)
- [Esophageal Neoplasms](#)
- [Genetic Predisposition to Disease](#)
- [Kidney Failure](#)
- [Lung Neoplasms](#)
- [Pulmonary Disease](#)