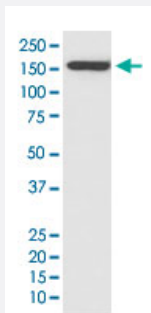


# CR2 monoclonal antibody, clone FHB-3

Catalog # MAB19672      Size 100 uL

## Applications



### Western Blot (Cell lysate)

Western Blot (Cell lysate) analysis of Raji cell lysate.

## Specification

<b>Product Description</b>	Rabbit monoclonal antibody raised against synthetic peptide of human CR2.
<b>Immunogen</b>	A synthetic peptide corresponding to human CR2.
<b>Host</b>	Rabbit
<b>Reactivity</b>	Human, Mouse
<b>Form</b>	Liquid
<b>Purification</b>	Affinity purification
<b>Isotype</b>	IgG
<b>Recommend Usage</b>	Flow Cytometry (1:50) Immunoprecipitation (1:50) Immunocytochemistry (1:50-200) Immunofluorescence (1:50-200) Immunohistochemistry (Formalin/PFA-fixed paraffin-embedded sections) (1:50-200) Western Blot (1:1000-5000) The optimal working dilution should be determined by the end user.
<b>Storage Buffer</b>	In PBS, 150 mM NaCl, pH 7.4 (50% glycerol, 0.02% sodium azide).



**Storage Instruction**

Store at -20°C for one year. After reconstitution, at 4°C for one month. It can also be aliquotted and stored frozen at -20°C for a longer time. Avoid repeated freezing and thawing.

**Note**

This product contains sodium azide: a POISONOUS AND HAZARDOUS SUBSTANCE which should be handled by trained staff only.

## Applications

- Western Blot (Cell lysate)

Western Blot (Cell lysate) analysis of Raji cell lysate.

- Immunohistochemistry (Formalin/PFA-fixed paraffin-embedded sections)

- Immunocytochemistry

- Immunofluorescence

- Immunoprecipitation

- Flow Cytometry

## Gene Info — CR2

**Entrez GeneID**[1380](#)**Protein Accession#**[P20023](#)**Gene Name**

CR2

**Gene Alias**

C3DR, CD21, SLEB9

**Gene Description**

complement component (3d/Epstein Barr virus) receptor 2

**Omim ID**[120650 610927](#)**Gene Ontology**[Hyperlink](#)**Gene Summary**

Complement component receptor-2 (CR2) is the membrane protein on B lymphocytes to which the Epstein-Barr virus (EBV) binds during infection of these cells. See also CR1 (MIM 120620). Yefenof et al. (1976) [PubMed 181330] found complete overlapping of EBV receptors and C3 (MIM 120700) receptors on human B lymphocytes.[supplied by OMIM]

**Other Designations**

OTTHUMP00000034421|OTTHUMP00000034447



## Pathway

- [B cell receptor signaling pathway](#)
- [Complement and coagulation cascades](#)
- [Hematopoietic cell lineage](#)

## Disease

- [Genetic Predisposition to Disease](#)
- [Lupus Erythematosus](#)
- [Lymphoma](#)
- [Macular Degeneration](#)
- [Nasopharyngeal Neoplasms](#)
- [Parkinson disease](#)