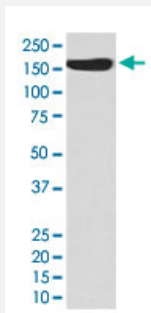


# CD163 monoclonal antibody, clone ABCC-3

Catalog # MAB19666      Size 100 uL

## Applications



### Western Blot (Tissue lysate)

Western Blot (Tissue lysate) analysis of human fetal kidney lysate.

## Specification

<b>Product Description</b>	Rabbit monoclonal antibody raised against synthetic peptide of human CD163.
<b>Immunogen</b>	A synthetic peptide corresponding to human CD163.
<b>Host</b>	Rabbit
<b>Reactivity</b>	Human
<b>Form</b>	Liquid
<b>Purification</b>	Affinity purification
<b>Isotype</b>	IgG
<b>Recommend Usage</b>	Immunoprecipitation (1:30) Immunohistochemistry (Formalin/PFA-fixed paraffin-embedded sections) (1:50-200) Western Blot (1:500-2000) The optimal working dilution should be determined by the end user.
<b>Storage Buffer</b>	In PBS, 150 mM NaCl, pH 7.4 (50% glycerol, 0.02% sodium azide).
<b>Storage Instruction</b>	Store at -20°C for one year. After reconstitution, at 4°C for one month. It can also be aliquotted and stored frozen at -20°C for a longer time. Avoid repeated freezing and thawing.

**Note**

This product contains sodium azide: a POISONOUS AND HAZARDOUS SUBSTANCE which should be handled by trained staff only.

## Applications

- Western Blot (Tissue lysate)

Western Blot (Tissue lysate) analysis of human fetal kidney lysate.

- Immunohistochemistry (Formalin/PFA-fixed paraffin-embedded sections)
- Immunoprecipitation

## Gene Info — CD163

Entrez GeneID	<a href="#">9332</a>
---------------	----------------------

Protein Accession#	<a href="#">Q86VB7</a>
--------------------	------------------------

Gene Name	CD163
-----------	-------

Gene Alias	M130, MM130
------------	-------------

Gene Description	CD163 molecule
------------------	----------------

Omim ID	<a href="#">605545</a>
---------	------------------------

Gene Ontology	<a href="#">Hyperlink</a>
---------------	---------------------------

Other Designations	CD163 antigen macrophage-associated antigen
--------------------	---

## Disease

- [Kidney Failure](#)
- [Tobacco Use Disorder](#)