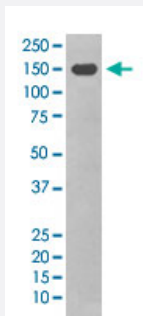


ITGAX monoclonal antibody, clone BCE-9

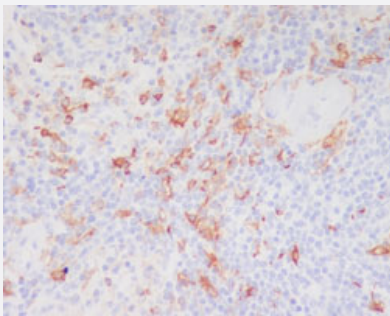
Catalog # MAB19661 Size 100 uL

Applications



Western Blot (Cell lysate)

Western Blot (Cell lysate) analysis of THP-1 cell lysate treated with TPA.



Immunohistochemistry (Formalin/PFA-fixed paraffin-embedded sections)

Immunohistochemical staining of human spleen.

Specification

Product Description	Rabbit monoclonal antibody raised against synthetic peptide of human ITGAX.
Immunogen	A synthetic peptide corresponding to human ITGAX.
Host	Rabbit
Reactivity	Human
Form	Liquid
Purification	Affinity purification
Isotype	IgG

Recommend Usage	<p>Immunoprecipitation (1:50)</p> <p>Immunocytochemistry (1:50-200)</p> <p>Immunofluorescence (1:50-200)</p> <p>Immunohistochemistry (Formalin/PFA-fixed paraffin-embedded sections) (1:50-200)</p> <p>Western Blot (1:500-2000)</p> <p>The optimal working dilution should be determined by the end user.</p>
Storage Buffer	In PBS, 150 mM NaCl, pH 7.4 (50% glycerol, 0.02% sodium azide).
Storage Instruction	Store at -20°C for one year. After reconstitution, at 4°C for one month. It can also be aliquotted and stored frozen at -20°C for a longer time. Avoid repeated freezing and thawing.
Note	This product contains sodium azide: a POISONOUS AND HAZARDOUS SUBSTANCE which should be handled by trained staff only.

Applications

- Western Blot (Cell lysate)

Western Blot (Cell lysate) analysis of THP-1 cell lysate treated with TPA.

- Immunohistochemistry (Formalin/PFA-fixed paraffin-embedded sections)

Immunohistochemical staining of human spleen.

- Immunocytochemistry

- Immunofluorescence

- Immunoprecipitation

Gene Info — ITGAX

Entrez GeneID	3687
Protein Accession#	P20702
Gene Name	ITGAX
Gene Alias	CD11C, SLEB6
Gene Description	integrin, alpha X (complement component 3 receptor 4 subunit)
Omim ID	151510
Gene Ontology	Hyperlink

Gene Summary

This gene encodes the integrin alpha X chain protein. Integrins are heterodimeric integral membrane proteins composed of an alpha chain and a beta chain. This protein combines with the beta 2 chain (ITGB2) to form a leukocyte-specific integrin referred to as inactivated-C3b (iC3b) receptor 4 (CR4). The alpha X beta 2 complex seems to overlap the properties of the alpha M beta 2 integrin in the adherence of neutrophils and monocytes to stimulated endothelium cells, and in the phagocytosis of complement coated particles. [provided by RefSeq]

Other Designations

OTTHUMP00000163299|integrin alpha X|integrin, alpha X (antigen CD11C (p150), alpha polypeptide)|leu M5, alpha subunit|leukocyte surface antigen p150,95, alpha subunit|myeloid membrane antigen, alpha subunit|p150 95 integrin alpha chain

Pathway

- [Regulation of actin cytoskeleton](#)

Disease

- [Genetic Predisposition to Disease](#)
- [Helicobacter Infections](#)
- [Lupus Erythematosus](#)
- [Stomach Ulcer](#)