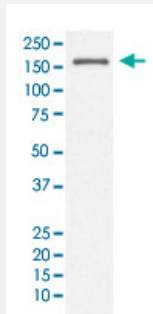


ITGAL monoclonal antibody, clone EGF-9

Catalog # MAB19658 Size 100 uL

Applications



Western Blot (Cell lysate)

Western Blot (Cell lysate) analysis of Jurkat cell lysate.

Specification

Product Description	Rabbit monoclonal antibody raised against synthetic peptide of human ITGAL.
Immunogen	A synthetic peptide corresponding to human ITGAL.
Host	Rabbit
Reactivity	Human
Form	Liquid
Purification	Affinity purification
Isotype	IgG
Recommend Usage	Flow Cytometry (1:50) Immunoprecipitation (1:50) Immunocytochemistry (1:50-100) Immunofluorescence (1:50-100) Immunohistochemistry (Formalin/PFA-fixed paraffin-embedded sections) (1:50-200) Western Blot (1:1000-2000) The optimal working dilution should be determined by the end user.
Storage Buffer	In PBS, 150 mM NaCl, pH 7.4 (50% glycerol, 0.02% sodium azide).

Storage Instruction

Store at -20°C for one year. After reconstitution, at 4°C for one month. It can also be aliquotted and stored frozen at -20°C for a longer time. Avoid repeated freezing and thawing.

Note

This product contains sodium azide: a POISONOUS AND HAZARDOUS SUBSTANCE which should be handled by trained staff only.

Applications

- Western Blot (Cell lysate)

Western Blot (Cell lysate) analysis of Jurkat cell lysate.

- Immunohistochemistry (Formalin/PFA-fixed paraffin-embedded sections)

- Immunocytochemistry

- Immunofluorescence

- Immunoprecipitation

- Flow Cytometry

Gene Info — ITGAL

Entrez GeneID[3683](#)**Protein Accession#**[P20701](#)**Gene Name**

ITGAL

Gene Alias

CD11A, LFA-1, LFA1A

Gene Description

integrin, alpha L (antigen CD11A (p180), lymphocyte function-associated antigen 1; alpha polypeptide)

Omim ID[153370](#)**Gene Ontology**[Hyperlink](#)

Gene Summary

ITGAL encodes the integrin alpha L chain. Integrins are heterodimeric integral membrane proteins composed of an alpha chain and a beta chain. This L-domain containing alpha integrin combines with the beta 2 chain (ITGB2) to form the integrin lymphocyte function-associated antigen-1 (LFA-1), which is expressed on all leukocytes. LFA-1 plays a central role in leukocyte intercellular adhesion through interactions with its ligands, ICAMs 1-3 (intercellular adhesion molecules 1 through 3), and also functions in lymphocyte costimulatory signaling. Two transcript variants encoding different isoforms have been found for this gene. [provided by RefSeq]

Other Designations

LFA-1 alpha|antigen CD11A (p180), lymphocyte function-associated antigen 1, alpha polypeptide|integrin alpha L|integrin gene promoter|lymphocyte function-associated antigen 1

Pathway

- [Cell adhesion molecules \(CAMs\)](#)
- [Leukocyte transendothelial migration](#)
- [Natural killer cell mediated cytotoxicity](#)
- [Regulation of actin cytoskeleton](#)

Disease

- [Cardiovascular Diseases](#)
- [Diabetes Mellitus](#)
- [Edema](#)
- [Genetic Predisposition to Disease](#)
- [Helicobacter Infections](#)
- [Stomach Ulcer](#)