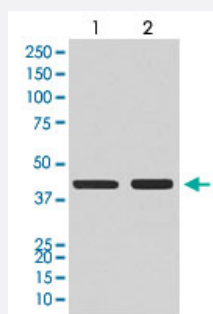


CCR7 monoclonal antibody, clone CFO-3

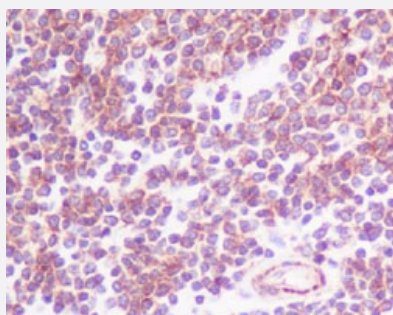
Catalog # MAB19655 Size 100 uL

Applications



Western Blot

Western Blot analysis of (1) Daudi, (2) MCF-7 cell lysate.



Immunohistochemistry (Formalin/PFA-fixed paraffin-embedded sections)

Immunohistochemical staining of human spleen.

Specification

Product Description	Rabbit monoclonal antibody raised against synthetic peptide of human CCR7.
Immunogen	A synthetic peptide corresponding to human CCR7.
Host	Rabbit
Reactivity	Human, Mouse, Rat
Form	Liquid
Purification	Affinity purification
Isotype	IgG

Recommend Usage	Immunoprecipitation (1:50) Immunocytochemistry (1:50-200) Immunofluorescence (1:50-200) Immunohistochemistry (Formalin/PFA-fixed paraffin-embedded sections) (1:50-200) Western Blot (1:500-2000) The optimal working dilution should be determined by the end user.
Storage Buffer	In PBS, 150 mM NaCl, pH 7.4 (50% glycerol, 0.02% sodium azide).
Storage Instruction	Store at -20°C for one year. After reconstitution, at 4°C for one month. It can also be aliquotted and stored frozen at -20°C for a longer time. Avoid repeated freezing and thawing.
Note	This product contains sodium azide: a POISONOUS AND HAZARDOUS SUBSTANCE which should be handled by trained staff only.

Applications

- Western Blot

Western Blot analysis of (1) Daudi, (2) MCF-7 cell lysate.

- Immunohistochemistry (Formalin/PFA-fixed paraffin-embedded sections)

Immunohistochemical staining of human spleen.

- Immunocytochemistry

- Immunofluorescence

- Immunoprecipitation

Gene Info — CCR7

Entrez GeneID	1236
Protein Accession#	P32248
Gene Name	CCR7
Gene Alias	BLR2, CD197, CDw197, CMKBR7, EBI1
Gene Description	chemokine (C-C motif) receptor 7
Omim ID	600242
Gene Ontology	Hyperlink

Gene Summary

The protein encoded by this gene is a member of the G protein-coupled receptor family. This receptor was identified as a gene induced by the Epstein-Barr virus (EBV), and is thought to be a mediator of EBV effects on B lymphocytes. This receptor is expressed in various lymphoid tissues and activates B and T lymphocytes. It has been shown to control the migration of memory T cells to inflamed tissues, as well as stimulate dendritic cell maturation. The chemokine (C-C motif) ligand 19 (CCL19/ECL) has been reported to be a specific ligand of this receptor. [provided by RefSeq]

Other Designations

C-C chemokine receptor type 7|CC chemokine receptor 7|EBV-induced G protein-coupled receptor 1|Epstein-Barr virus induced G-protein coupled receptor|Epstein-Barr virus induced gene 1|MLP-3 beta receptor|chemokine (C-C) receptor 7|lymphocyte-specific G pro

Pathway

- [Chemokine signaling pathway](#)
- [Cytokine-cytokine receptor interaction](#)

Disease

- [Birth Weight](#)
- [Breast cancer](#)
- [Breast Neoplasms](#)
- [Genetic Predisposition to Disease](#)
- [Glioblastoma](#)
- [Glioma](#)
- [HIV Infections](#)
- [Leukemia](#)
- [Lupus Erythematosus](#)
- [Meningeal Neoplasms](#)
- [Meningioma](#)
- [Scleroderma](#)