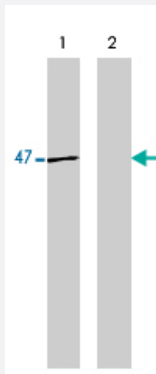


# ENO2 monoclonal antibody, clone NSE-P2

Catalog # MAB1963

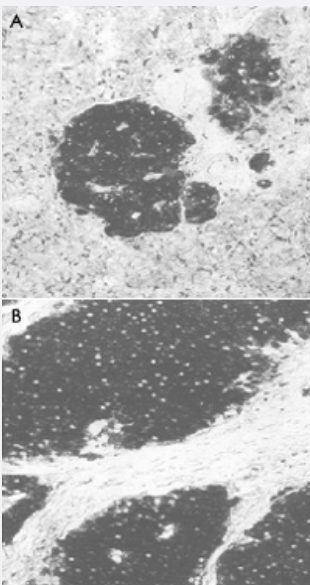
Size 200 ug

## Applications



### Western Blot (Recombinant protein)

Western blot analysis using ENO2 monoclonal antibody, clone NSE-P2 (Cat # MAB1963) on gamma-enolase, 100 ng (lane 1) and alpha-enolase, 500 ng (lane 2) standards.



### Immunohistochemistry (Formalin/PFA-fixed paraffin-embedded sections)

Immunohistochemical staining of normal pancreas tissue (A) and small bowel tumor tissue (B) using ENO2 monoclonal antibody, clone NSE-P2 (Cat # MAB1963).

## Specification

<b>Product Description</b>	Mouse monoclonal antibody raised against synthetic peptide of ENO2.
<b>Immunogen</b>	A synthetic peptide corresponding to human ENO2.
<b>Host</b>	Mouse

Reactivity	Chicken, Human, Mouse
Form	Liquid
Isotype	IgG1
Quality Control Testing	Antibody Reactive Against Synthetic Peptide.
Recommend Usage	Western blot (1 to 2 ug/mL) Immunohistochemistry on formalin to fixed/paraffin to embedded tissues (1 to 5 ug/mL) The optimal working dilution should be determined by the end user.
Storage Buffer	In PBS (0.08% sodium azide)
Storage Instruction	Store at -20°C. Aliquot to avoid repeated freezing and thawing.
Note	This product contains sodium azide: a POISONOUS AND HAZARDOUS SUBSTANCE which should be handled by trained staff only.

## Applications

- Western Blot (Recombinant protein)

Western blot analysis using ENO2 monoclonal antibody, clone NSE-P2 (Cat # MAB1963) on gamma-enolase, 100 ng (lane 1) and alpha-enolase, 500 ng (lane 2) standards.

- Immunohistochemistry (Formalin/PFA-fixed paraffin-embedded sections)

Immunohistochemical staining of normal pancreas tissue (A) and small bowel tumor tissue (B) using ENO2 monoclonal antibody, clone NSE-P2 (Cat # MAB1963).

- Enzyme-linked Immunoabsorbent Assay

## Gene Info — ENO2

Entrez GeneID	<a href="#">2026</a>
Gene Name	ENO2
Gene Alias	NSE
Gene Description	enolase 2 (gamma, neuronal)
Omim ID	<a href="#">131360</a>
Gene Ontology	<a href="#">Hyperlink</a>

### Gene Summary

This gene encodes one of the three enolase isoenzymes found in mammals. This isoenzyme, a homodimer, is found in mature neurons and cells of neuronal origin. A switch from alpha enolase to gamma enolase occurs in neural tissue during development in rats and primates. [provided by RefSeq]

### Other Designations

2-phospho-D-glycerate hydrolyase|enolase 2|neural enolase|neuron specific gamma enolase|neuron-specific enolase

## Publication Reference

- [Plasma S100beta and NSE levels and progression in multiple sclerosis.](#)

Koch M, Mostert J, Heersema D, Teelken A, De Keyser J.

Journal of the Neurological Sciences 2007 Jan; 252(2):154.

Application: ELISA, Human, Plasma from patients with multiple sclerosis

- [S-100B and NSE: markers of initial impact of subarachnoid haemorrhage and their relation to vasospasm and outcome.](#)

Oertel M, Schumacher U, McArthur DL, Kästner S, Böker DK.

Journal of Clinical Neuroscience 2006 Oct; 13(8):834.

Application: RIA, Human, Serum from patients with subarachnoid haemorrhage

- [Immunoreactive neuron-specific enolase \(NSE\) is expressed in testicular carcinoma-in-situ.](#)

Kang JL, Meyts ER, Skakkebaek NE.

The Journal of Pathology 1996 Feb; 178(2):161.

Application: IHC-P, Human, Overt germ cell tumours, Testicular carcinoma, Testes

## Pathway

- [Biosynthesis of alkaloids derived from histidine and purine](#)
- [Biosynthesis of alkaloids derived from ornithine](#)
- [Biosynthesis of alkaloids derived from shikimate pathway](#)
- [Biosynthesis of alkaloids derived from terpenoid and polyketide](#)
- [Biosynthesis of phenylpropanoids](#)
- [Biosynthesis of plant hormones](#)
- [Biosynthesis of terpenoids and steroids](#)

- [Glycolysis / Gluconeogenesis](#)
- [Metabolic pathways](#)
- [RNA degradation](#)

## Disease

- [Alzheimer disease](#)
- [Cerebral Amyloid Angiopathy](#)
- [Genetic Predisposition to Disease](#)
- [Neuroblastoma](#)
- [Schizophrenia](#)