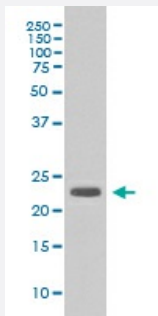


BCL2L11 monoclonal antibody, clone CBE-2

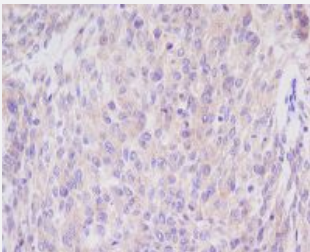
Catalog # MAB19623 Size 100 uL

Applications



Western Blot (Cell lysate)

Western blot analysis of A431 cell lysate with BCL2L11 monoclonal antibody.



Immunohistochemistry (Formalin/PFA-fixed paraffin-embedded sections)

Immunohistochemical staining of paraffin-embedded human cervix cancer with BCL2L11 monoclonal antibody.

Specification

Product Description	Rabbit monoclonal antibody raised against synthetic peptide of human BCL2L11.
Immunogen	A synthetic peptide corresponding to human BCL2L11.
Host	Rabbit
Reactivity	Human, Mouse, Rat
Form	Liquid
Purification	Affinity purification
Isotype	IgG

Recommend Usage	Immunocytochemistry (1:50-1:100) Immunofluorescence (1:50-1:100) Immunohistochemistry (1:50-1:100) Immunoprecipitation (1:40) Western Blot (1:500-1:1000) The optimal working dilution should be determined by the end user.
Storage Buffer	In PBS, pH 7.4, 150mM NaCl, 0.02% sodium azide and 50% glycerol.
Storage Instruction	Store at -20°C for one year. After reconstitution, at 4°C for one month. It can also be aliquotted and stored frozen at -20°C for a longer time. Avoid repeated freezing and thawing.
Note	This product contains sodium azide: a POISONOUS AND HAZARDOUS SUBSTANCE which should be handled by trained staff only.

Applications

- Western Blot (Cell lysate)

Western blot analysis of A431 cell lysate with BCL2L11 monoclonal antibody.

- Immunohistochemistry (Formalin/PFA-fixed paraffin-embedded sections)

Immunohistochemical staining of paraffin-embedded human cervix cancer with BCL2L11 monoclonal antibody.

- Immunocytochemistry

- Immunofluorescence

- Immunoprecipitation

Gene Info — BCL2L11

Entrez GeneID	10018
Protein Accession#	O43521
Gene Name	BCL2L11
Gene Alias	BAM, BIM, BIM-alpha6, BIM-beta6, BIM-beta7, BOD, BimEL, BimL
Gene Description	BCL2-like 11 (apoptosis facilitator)
Omim ID	603827
Gene Ontology	Hyperlink

Gene Summary

The protein encoded by this gene belongs to the BCL-2 protein family. BCL-2 family members form hetero- or homodimers and act as anti- or pro-apoptotic regulators that are involved in a wide variety of cellular activities. The protein encoded by this gene contains a Bcl-2 homology domain 3 (BH3). It has been shown to interact with other members of the BCL-2 protein family, including BCL2, BCL2L1/BCL-X(L), and MCL1, and to act as an apoptotic activator. The expression of this gene can be induced by nerve growth factor (NGF), as well as by the forkhead transcription factor FOXO1, which suggests a role of this gene in neuronal and lymphocyte apoptosis. Transgenic studies of the mouse counterpart suggested that this gene functions as an essential initiator of apoptosis in thymocyte-negative selection. Several alternatively spliced transcript variants of this gene have been identified. [provided by RefSeq]

Other Designations

BCL2-like 11|bcl-2 interacting mediator of cell death|bcl-2 interacting protein Bim|bcl-2-related ovarian death agonist

Disease

- [Adenocarcinoma](#)
- [Disease Progression](#)
- [Genetic Predisposition to Disease](#)
- [Head and Neck Neoplasms](#)
- [Hematologic Diseases](#)
- [Hodgkin Disease](#)
- [Leukemia](#)
- [Lymphatic Metastasis](#)
- [Lymphoma](#)
- [Lymphoproliferative Disorders](#)
- [Neoplasm Recurrence](#)
- [Neoplasms](#)
- [Neovascularization](#)
- [Occupational Diseases](#)
- [Stomach Neoplasms](#)
- [Waldenstrom Macroglobulinemia](#)
- [Werner syndrome](#)