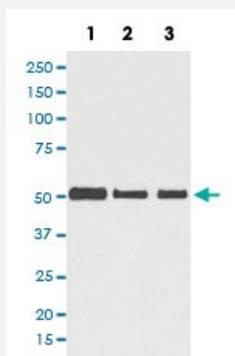


# TUBB3 monoclonal antibody, clone CB-20

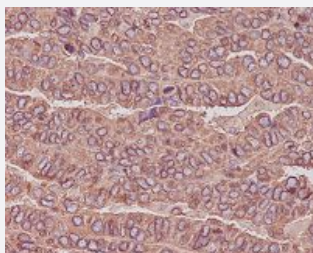
Catalog # MAB19618      Size 100 uL

## Applications



### Western Blot (Cell lysate)

Western blot analysis of HeLa cell lysate with TUBB3 monoclonal antibody.



### Immunohistochemistry (Formalin/PFA-fixed paraffin-embedded sections)

Immunohistochemical staining of paraffin-embedded human ovarian cancer with TUBB3 monoclonal antibody.

## Specification

<b>Product Description</b>	Rabbit monoclonal antibody raised against synthetic peptide of human TUBB3.
<b>Immunogen</b>	A synthetic peptide corresponding to human TUBB3.
<b>Host</b>	Rabbit
<b>Reactivity</b>	Human, Mouse, Rat
<b>Form</b>	Liquid
<b>Purification</b>	Affinity purification

Isotype	IgG
Recommend Usage	Immunohistochemistry (1:50-1:200) Immunoprecipitation (1:50) Flow Cytometry (1:50) Western Blot (1:5000-1:10000) The optimal working dilution should be determined by the end user.
Storage Buffer	In PBS, pH 7.4, 150mM NaCl, 0.02% sodium azide and 50% glycerol.
Storage Instruction	Store at -20°C for one year. After reconstitution, at 4°C for one month. It can also be aliquotted and stored frozen at -20°C for a longer time. Avoid repeated freezing and thawing.
Note	This product contains sodium azide: a POISONOUS AND HAZARDOUS SUBSTANCE which should be handled by trained staff only.

## Applications

- Western Blot (Cell lysate)

Western blot analysis of HeLa cell lysate with TUBB3 monoclonal antibody.

- Immunohistochemistry (Formalin/PFA-fixed paraffin-embedded sections)

Immunohistochemical staining of paraffin-embedded human ovarian cancer with TUBB3 monoclonal antibody.

- Immunocytochemistry

- Immunofluorescence

- Immunoprecipitation

- Flow Cytometry

## Gene Info — TUBB3

Entrez GeneID	<a href="#">10381</a>
Protein Accession#	<a href="#">Q13509</a>
Gene Name	TUBB3
Gene Alias	MC1R, TUBB4, beta-4
Gene Description	tubulin, beta 3

Omim ID	<a href="#">602661</a>
Gene Ontology	<a href="#">Hyperlink</a>
Gene Summary	O
Other Designations	tubulin, beta, 4

## Pathway

- [Gap junction](#)
- [Pathogenic Escherichia coli infection - EHEC](#)