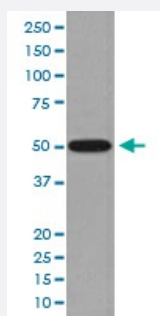


TUBB4B monoclonal antibody, clone DOF-20

Catalog # MAB19616 Size 100 uL

Applications



Western Blot (Cell lysate)

Western blot analysis of C6 cell lysate with TUBB4B monoclonal antibody.

Specification

Product Description Rabbit monoclonal antibody raised against synthetic peptide of human TUBB4B.

Immunogen A synthetic peptide corresponding to human TUBB4B.

Host Rabbit

Reactivity Human, Mouse, Rat

Form Liquid

Purification Affinity purification

Isotype IgG

Recommend Usage

- Immunocytochemistry (1:50-1:200)
- Immunofluorescence (1:50-1:200)
- Immunohistochemistry (1:50-1:200)
- Immunoprecipitation (1:50)
- Western Blot (1:1000-1:2000)
- The optimal working dilution should be determined by the end user.

Storage Buffer In PBS, pH 7.4, 150mM NaCl, 0.02% sodium azide and 50% glycerol.

Storage Instruction

Store at -20°C for one year. After reconstitution, at 4°C for one month. It can also be aliquotted and stored frozen at -20°C for a longer time. Avoid repeated freezing and thawing.

Note

This product contains sodium azide: a POISONOUS AND HAZARDOUS SUBSTANCE which should be handled by trained staff only.

Applications

- Western Blot (Cell lysate)

Western blot analysis of C6 cell lysate with TUBB4B monoclonal antibody.

- Immunohistochemistry (Formalin/PFA-fixed paraffin-embedded sections)

- Immunocytochemistry

- Immunofluorescence

- Immunoprecipitation

- Flow Cytometry

Gene Info — TUBB4B

Entrez GeneID [10383](#)

Protein Accession# [P68371](#)

Gene Name TUBB4B

Gene Alias RP13-122B23.2, Beta2, TUBB2, TUBB2C

Gene Description tubulin, beta 4B class IVb

Omim ID [602660](#)

Gene Ontology [Hyperlink](#)

Gene Summary O

Other Designations class IVb beta tubulin|class IVb beta-tubulin|tubulin beta-2 chain|tubulin beta-2C chain|tubulin beta-4B chain|tubulin, beta 2C|tubulin, beta, 2

Pathway

- [Gap junction](#)
- [Pathogenic Escherichia coli infection - EHEC](#)