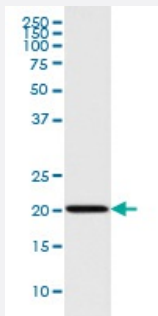


BAD monoclonal antibody, clone CHC-2

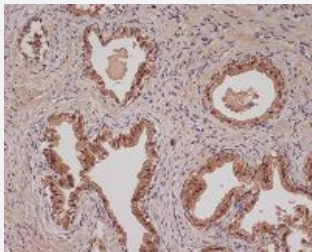
Catalog # MAB19602 Size 100 uL

Applications



Western Blot (Cell lysate)

Western blot analysis of HeLa cell lysate with BAD monoclonal antibody.



Immunohistochemistry (Formalin/PFA-fixed paraffin-embedded sections)

Immunohistochemical staining of paraffin-embedded human colon cancer with BAD monoclonal antibody.

Specification

Product Description	Rabbit monoclonal antibody raised against synthetic peptide of human BAD.
Immunogen	A synthetic peptide corresponding to human BAD.
Host	Rabbit
Reactivity	Human, Mouse, Rat
Form	Liquid
Purification	Affinity purification
Isotype	IgG

Recommend Usage	Immunocytochemistry (1:50-1:200) Immunofluorescence (1:50-1:200) Immunohistochemistry (1:50-1:200) Immunoprecipitation (1:30) Flow Cytometry (1:50) Western Blot (1:1000-1:2000) The optimal working dilution should be determined by the end user.
Storage Buffer	In PBS, pH 7.4, 150mM NaCl, 0.02% sodium azide and 50% glycerol.
Storage Instruction	Store at -20°C for one year. After reconstitution, at 4°C for one month. It can also be aliquotted and stored frozen at -20°C for a longer time. Avoid repeated freezing and thawing.
Note	This product contains sodium azide: a POISONOUS AND HAZARDOUS SUBSTANCE which should be handled by trained staff only.

Applications

- Western Blot (Cell lysate)

Western blot analysis of HeLa cell lysate with BAD monoclonal antibody.

- Immunohistochemistry (Formalin/PFA-fixed paraffin-embedded sections)

Immunohistochemical staining of paraffin-embedded human colon cancer with BAD monoclonal antibody.

- Immunocytochemistry

- Immunofluorescence

- Immunoprecipitation

- Flow Cytometry

Gene Info — BAD

Entrez GeneID	572
Protein Accession#	Q92934
Gene Name	BAD
Gene Alias	BBC2, BCL2L8
Gene Description	BCL2-associated agonist of cell death

Omim ID [603167](#)

Gene Ontology [Hyperlink](#)

Gene Summary

The protein encoded by this gene is a member of the BCL-2 family. BCL-2 family members are known to be regulators of programmed cell death. This protein positively regulates cell apoptosis by forming heterodimers with BCL-xL and BCL-2, and reversing their death repressor activity. Proapoptotic activity of this protein is regulated through its phosphorylation. Protein kinases AKT and MAP kinase, as well as protein phosphatase calcineurin were found to be involved in the regulation of this protein. Alternative splicing of this gene results in two transcript variants which encode the same isoform. [provided by RefSeq]

Other Designations

BCL-X/BCL-2 binding protein|BCL2-antagonist of cell death protein|BCL2-binding component 6|BCL2-binding protein

Pathway

- [Acute myeloid leukemia](#)
- [Amyotrophic lateral sclerosis \(ALS\)](#)
- [Apoptosis](#)
- [Chronic myeloid leukemia](#)
- [Colorectal cancer](#)
- [Endometrial cancer](#)
- [ErbB signaling pathway](#)
- [Focal adhesion](#)
- [Insulin signaling pathway](#)
- [Melanoma](#)
- [Neurotrophin signaling pathway](#)
- [Non-small cell lung cancer](#)
- [Pancreatic cancer](#)
- [Pathways in cancer](#)
- [Prostate cancer](#)
- [VEGF signaling pathway](#)

Disease

- [Cardiovascular Diseases](#)
- [Diabetes Mellitus](#)
- [Edema](#)
- [Genetic Predisposition to Disease](#)
- [Lymphoma](#)
- [Parkinson disease](#)
- [Thyroid Neoplasms](#)