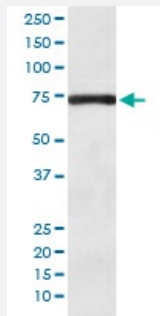


BACE1 monoclonal antibody, clone ABFF-2

Catalog # MAB19601 Size 100 uL

Applications



Western Blot (Cell lysate)

Western blot analysis of SH-SY5Y cell lysate with BACE1 monoclonal antibody.

Specification

Product Description	Rabbit monoclonal antibody raised against synthetic peptide of human BACE1.
Immunogen	A synthetic peptide corresponding to human BACE1.
Host	Rabbit
Reactivity	Human, Mouse, Rat
Form	Liquid
Purification	Affinity purification
Isotype	IgG
Recommend Usage	Immunoprecipitation (1:40) Western Blot (1:500-1:2000) The optimal working dilution should be determined by the end user.
Storage Buffer	In PBS, pH 7.4, 150mM NaCl, 0.02% sodium azide and 50% glycerol.
Storage Instruction	Store at -20°C for one year. After reconstitution, at 4°C for one month. It can also be aliquotted and stored frozen at -20°C for a longer time. Avoid repeated freezing and thawing.

Note

This product contains sodium azide: a POISONOUS AND HAZARDOUS SUBSTANCE which should be handled by trained staff only.

Applications

- Western Blot (Cell lysate)

Western blot analysis of SH-SY5Y cell lysate with BACE1 monoclonal antibody.

- Immunoprecipitation

Gene Info — BACE1

Entrez GeneID [23621](#)

Protein Accession# [P56817](#)

Gene Name BACE1

Gene Alias ASP2, BACE, FLJ90568, HSPC104, KIAA1149

Gene Description beta-site APP-cleaving enzyme 1

Omim ID [604252](#)

Gene Ontology [Hyperlink](#)

Gene Summary Cerebral deposition of amyloid beta peptide is an early and critical feature of Alzheimer's disease. Amyloid beta peptide is generated by proteolytic cleavage of amyloid precursor protein (APP) by two proteases, one of which is the protein encoded by this gene. The encoded protein, a member of the peptidase A1 protein family, is a type I integral membrane glycoprotein and aspartic protease that is found mainly in the Golgi. Four transcript variants encoding different isoforms have been described for this gene. [provided by RefSeq]

Other Designations APP beta-secretase|aspartyl protease 2|beta-secretase|beta-site amyloid beta A4 precursor protein-cleaving enzyme|beta-site amyloid precursor protein cleaving enzyme|memapsin-2|membrane-associated aspartic protease 2|transmembrane aspartic proteinase Asp2

Disease

- [Alzheimer disease](#)

- [Amnesia](#)

- [Cardiovascular Diseases](#)
- [Cognition](#)
- [Cognition Disorders](#)
- [Diabetes Complications](#)
- [Genetic Predisposition to Disease](#)
- [Metabolic Syndrome X](#)
- [Neoplasms](#)
- [Neuropsychological Tests](#)
- [Osteoporosis](#)