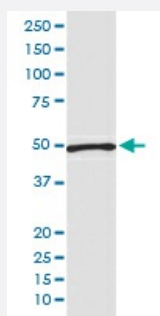


ATG4C monoclonal antibody, clone ABIC-1

Catalog # MAB19590 Size 100 uL

Applications



Western Blot (Cell lysate)

Western blot analysis of Jurkat cell lysate with ATG4C monoclonal antibody.

Specification

Product Description Rabbit monoclonal antibody raised against synthetic peptide of human ATG4C.

Immunogen A synthetic peptide corresponding to human ATG4C.

Host Rabbit

Reactivity Human

Form Liquid

Purification Affinity purification

Isotype IgG

Recommend Usage
Immunohistochemistry (1:50-1:200)
Flow Cytometry (1:50)
Western Blot (1:1000-1:5000)
The optimal working dilution should be determined by the end user.

Storage Buffer In PBS, pH 7.4, 150mM NaCl, 0.02% sodium azide and 50% glycerol.

Storage Instruction Store at -20°C for one year. After reconstitution, at 4°C for one month. It can also be aliquotted and stored frozen at -20°C for a longer time. Avoid repeated freezing and thawing.

Note

This product contains sodium azide: a POISONOUS AND HAZARDOUS SUBSTANCE which should be handled by trained staff only.

Applications

- Western Blot (Cell lysate)

Western blot analysis of Jurkat cell lysate with ATG4C monoclonal antibody.

- Immunohistochemistry (Formalin/PFA-fixed paraffin-embedded sections)

- Flow Cytometry

Gene Info — ATG4C

Entrez GeneID [84938](#)

Protein Accession# [Q96DT6](#)

Gene Name ATG4C

Gene Alias APG4-C, APG4C, AUTL1, AUTL3, FLJ14867

Gene Description ATG4 autophagy related 4 homolog C (S. cerevisiae)

Omim ID [611339](#)

Gene Ontology [Hyperlink](#)

Gene Summary

Autophagy is the process by which endogenous proteins and damaged organelles are destroyed intracellularly. Autophagy is postulated to be essential for cell homeostasis and cell remodeling during differentiation, metamorphosis, non-apoptotic cell death, and aging. Reduced levels of autophagy have been described in some malignant tumors, and a role for autophagy in controlling the unregulated cell growth linked to cancer has been proposed. This gene encodes a member of the autophagin protein family. The encoded protein is also designated as a member of the C-54 family of cysteine proteases. Alternate transcriptional splice variants, encoding the same protein, have been characterized. [provided by RefSeq]

Other Designations

APG4 autophagy 4 homolog C|AUT-like 1, cysteine endopeptidase|AUT-like 3 cysteine endopeptidase|OTTHUMP00000010715|autophagin-3|autophagy-related cysteine endopeptidase 3

Pathway

- [Regulation of autophagy](#)