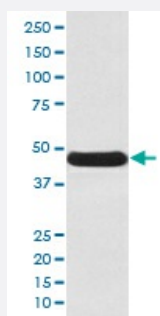


# ATG4B monoclonal antibody, clone ABIA-1

Catalog # MAB19589      Size 100 uL

## Applications



### Western Blot (Cell lysate)

Western blot analysis of Ramos cell lysate with ATG4B monoclonal antibody.

## Specification

<b>Product Description</b>	Rabbit monoclonal antibody raised against synthetic peptide of human ATG4B.
<b>Immunogen</b>	A synthetic peptide corresponding to human ATG4B.
<b>Host</b>	Rabbit
<b>Reactivity</b>	Human, Mouse, Rat
<b>Form</b>	Liquid
<b>Purification</b>	Affinity purification
<b>Isotype</b>	IgG
<b>Recommend Usage</b>	Flow Cytometry (1:100) Western Blot (1:500-1:2000) The optimal working dilution should be determined by the end user.
<b>Storage Buffer</b>	In PBS, pH 7.4, 150mM NaCl, 0.02% sodium azide and 50% glycerol.
<b>Storage Instruction</b>	Store at -20°C for one year. After reconstitution, at 4°C for one month. It can also be aliquotted and stored frozen at -20°C for a longer time. Avoid repeated freezing and thawing.

## Note

This product contains sodium azide: a POISONOUS AND HAZARDOUS SUBSTANCE which should be handled by trained staff only.

## Applications

- Western Blot (Cell lysate)

Western blot analysis of Ramos cell lysate with ATG4B monoclonal antibody.

- Flow Cytometry

## Gene Info — ATG4B

Entrez GeneID [23192](#)

Protein Accession# [Q9Y4P1](#)

Gene Name ATG4B

Gene Alias APG4B, AUTL1, MGC1353

Gene Description ATG4 autophagy related 4 homolog B (S. cerevisiae)

Omim ID [611338](#)

Gene Ontology [Hyperlink](#)

**Gene Summary** Autophagy is the process by which endogenous proteins and damaged organelles are destroyed intracellularly. Autophagy is postulated to be essential for cell homeostasis and cell remodeling during differentiation, metamorphosis, non-apoptotic cell death, and aging. Reduced levels of autophagy have been described in some malignant tumors, and a role for autophagy in controlling the unregulated cell growth linked to cancer has been proposed. This gene encodes a member of the autophagin protein family. The encoded protein is also designated as a member of the C-54 family of cysteine proteases. Alternate transcriptional splice variants, encoding different isoforms, have been characterized. [provided by RefSeq]

**Other Designations** APG4 autophagy 4 homolog B|autophagin-1

## Pathway

- [Regulation of autophagy](#)