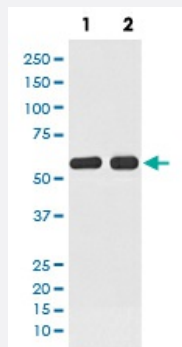


ATF7 monoclonal antibody, clone HBD-1

Catalog # MAB19587 Size 100 uL

Applications



Western Blot (Cell lysate)

Western blot analysis of (1) Raji cell lysate; (2) Raw 2647 cell lysate with ATF7 monoclonal antibody.

Specification

Product Description	Rabbit monoclonal antibody raised against synthetic peptide of human ATF7.
Immunogen	A synthetic peptide corresponding to human ATF7.
Host	Rabbit
Reactivity	Human, Mouse, Rat
Form	Liquid
Purification	Affinity purification
Isotype	IgG
Recommend Usage	Western Blot (1:500-1:1000) The optimal working dilution should be determined by the end user.
Storage Buffer	In PBS, pH 7.4, 150mM NaCl, 0.02% sodium azide and 50% glycerol.
Storage Instruction	Store at -20°C for one year. After reconstitution, at 4°C for one month. It can also be aliquotted and stored frozen at -20°C for a longer time. Avoid repeated freezing and thawing.

Note

This product contains sodium azide: a POISONOUS AND HAZARDOUS SUBSTANCE which should be handled by trained staff only.

Applications

- Western Blot (Cell lysate)

Western blot analysis of (1) Raji cell lysate; (2) Raw 2647 cell lysate with ATF7 monoclonal antibody.

Gene Info — ATF7

Entrez GeneID	11016
---------------	-----------------------

Protein Accession#	P17544
--------------------	------------------------

Gene Name	ATF7
-----------	------

Gene Alias	ATFA, MGC57182
------------	----------------

Gene Description	activating transcription factor 7
------------------	-----------------------------------

Omim ID	606371
---------	------------------------

Gene Ontology	Hyperlink
---------------	---------------------------

Other Designations	-
--------------------	---