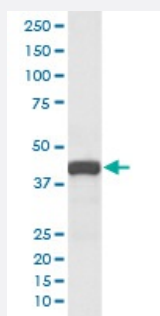


# ATG3 monoclonal antibody, clone ABBC-1

Catalog # MAB19567      Size 100 uL

## Applications



### Western Blot (Cell lysate)

Western blot analysis of Jurkat cell lysate with ATG3 monoclonal antibody.

## Specification

**Product Description** Rabbit monoclonal antibody raised against synthetic peptide of human ATG3.

**Immunogen** A synthetic peptide corresponding to human ATG3.

**Host** Rabbit

**Reactivity** Human, Mouse, Rat

**Form** Liquid

**Purification** Affinity purification

**Isotype** IgG

**Recommend Usage**  
 Immunocytochemistry (1:50-1:200)  
 Immunofluorescence (1:50-1:200)  
 Immunohistochemistry (1:50-1:200)  
 Western Blot (1:500-1:2000)  
 The optimal working dilution should be determined by the end user.

**Storage Buffer** In PBS, pH 7.4, 150mM NaCl, 0.02% sodium azide and 50% glycerol.

**Storage Instruction**

Store at -20°C for one year. After reconstitution, at 4°C for one month. It can also be aliquotted and stored frozen at -20°C for a longer time. Avoid repeated freezing and thawing.

**Note**

This product contains sodium azide: a POISONOUS AND HAZARDOUS SUBSTANCE which should be handled by trained staff only.

## Applications

- Western Blot (Cell lysate)

Western blot analysis of Jurkat cell lysate with ATG3 monoclonal antibody.

- Immunohistochemistry (Formalin/PFA-fixed paraffin-embedded sections)
- Immunocytochemistry
- Immunofluorescence

## Gene Info — ATG3

**Entrez GeneID** [64422](#)

**Protein Accession#** [Q9NT62](#)

**Gene Name** ATG3

**Gene Alias** APG3, APG3-LIKE, APG3L, DKFZp564M1178, FLJ22125, MGC15201, PC3-96

**Gene Description** ATG3 autophagy related 3 homolog (S. cerevisiae)

**Omim ID** [609606](#)

**Gene Ontology** [Hyperlink](#)

**Gene Summary** Autophagy is a process of bulk degradation of cytoplasmic components by the lysosome or vacuole. Human ATG3 displays the same enzymatic characteristics in vitro as yeast Apg3, a protein-conjugating enzyme essential for autophagy (Tanida et al., 2002 [PubMed 11825910]).[supplied by OMIM]

**Other Designations** 2610016C12Rik|APG3 autophagy 3-like|Apg3p|autophagy Apg3p/Aut1p-like

## Pathway

- [Regulation of autophagy](#)

## Disease

- [Huntington Disease](#)