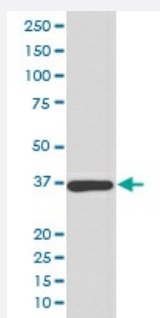


# ANXA10 monoclonal antibody, clone FFF-1

Catalog # MAB19560      Size 100 uL

## Applications



### Western Blot (Cell lysate)

Western blot analysis of HeLa cell lysate with ANXA10 monoclonal antibody.

## Specification

<b>Product Description</b>	Rabbit monoclonal antibody raised against synthetic peptide of human ANXA10.
<b>Immunogen</b>	A synthetic peptide corresponding to human ANXA10.
<b>Host</b>	Rabbit
<b>Reactivity</b>	Human, Mouse, Rat
<b>Form</b>	Liquid
<b>Purification</b>	Affinity purification
<b>Isotype</b>	IgG
<b>Recommend Usage</b>	Western Blot (1:500-1:2000) The optimal working dilution should be determined by the end user.
<b>Storage Buffer</b>	In PBS, pH 7.4, 150mM NaCl, 0.02% sodium azide and 50% glycerol.
<b>Storage Instruction</b>	Store at -20°C for one year. After reconstitution, at 4°C for one month. It can also be aliquotted and stored frozen at -20°C for a longer time. Avoid repeated freezing and thawing.

**Note**

This product contains sodium azide: a POISONOUS AND HAZARDOUS SUBSTANCE which should be handled by trained staff only.

## Applications

- Western Blot (Cell lysate)

Western blot analysis of HeLa cell lysate with ANXA10 monoclonal antibody.

## Gene Info — ANXA10

**Entrez GeneID** [11199](#)

**Protein Accession#** [Q9UJ72](#)

**Gene Name** ANXA10

**Gene Alias** ANX14

**Gene Description** annexin A10

**Omim ID** [608008](#)

**Gene Ontology** [Hyperlink](#)

**Gene Summary** This gene encodes a member of the annexin family. Members of this calcium-dependent phospholipid-binding protein family play a role in the regulation of cellular growth and in signal transduction pathways. The function of this gene has not yet been determined. [provided by RefSeq]

**Other Designations** annexin 14