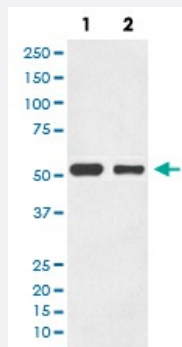


TUBA1B monoclonal antibody, clone CH-20

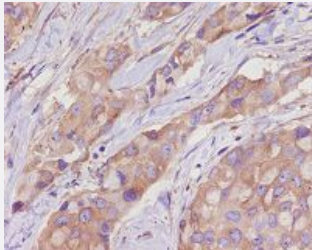
Catalog # MAB19549 Size 100 uL

Applications



Western Blot (Cell lysate)

Western blot analysis of (1) Mouse brain lysate; (2) C6 cell lysate; (3) Raw2647 cell lysate; (4) PC-12 cell lysate; (5) NIH/3T3 cell lysate with TUBA1B monoclonal antibody.



Immunohistochemistry (Formalin/PFA-fixed paraffin-embedded sections)

Immunohistochemical staining of paraffin-embedded human breast cancer with TUBA1B monoclonal antibody.

Specification

| | |
|----------------------------|--|
| Product Description | Rabbit monoclonal antibody raised against synthetic peptide of human TUBA1B. |
| Immunogen | A synthetic peptide corresponding to human TUBA1B. |
| Host | Rabbit |
| Reactivity | Human, Mouse, Rat |
| Form | Liquid |
| Purification | Affinity purification |
| Isotype | IgG |

| | |
|----------------------------|--|
| Recommend Usage | Immunocytochemistry (1:50-1:200) Immunofluorescence (1:50-1:200) Immunohistochemistry (1:50-1:200) Immunoprecipitation (1:50) Flow Cytometry (1:50) Western Blot (1:500-1:2000) The optimal working dilution should be determined by the end user. |
| Storage Buffer | In PBS, pH 7.4, 150mM NaCl, 0.02% sodium azide and 50% glycerol. |
| Storage Instruction | Store at -20°C for one year. After reconstitution, at 4°C for one month. It can also be aliquotted and stored frozen at -20°C for a longer time. Avoid repeated freezing and thawing. |
| Note | This product contains sodium azide: a POISONOUS AND HAZARDOUS SUBSTANCE which should be handled by trained staff only. |

Applications

- Western Blot (Cell lysate)

Western blot analysis of (1) Mouse brain lysate; (2) C6 cell lysate; (3) Raw2647 cell lysate; (4) PC-12 cell lysate; (5) NIH/3T3 cell lysate with TUBA1B monoclonal antibody.

- Immunohistochemistry (Formalin/PFA-fixed paraffin-embedded sections)

Immunohistochemical staining of paraffin-embedded human breast cancer with TUBA1B monoclonal antibody.

- Immunocytochemistry

- Immunofluorescence

- Immunoprecipitation

- Flow Cytometry

Gene Info — TUBA1B

| | |
|----------------------|-----------------------|
| Entrez GeneID | 10376 |
|----------------------|-----------------------|

| | |
|---------------------------|------------------------|
| Protein Accession# | P68363 |
|---------------------------|------------------------|

| | |
|------------------|--------|
| Gene Name | TUBA1B |
|------------------|--------|

| | |
|--------------------|--|
| Gene Alias | K-ALPHA-1 |
| Gene Description | tubulin, alpha 1b |
| Omim ID | 602530 |
| Gene Ontology | Hyperlink |
| Gene Summary | O |
| Other Designations | alpha tubulin tubulin, alpha, ubiquitous |

Pathway

- [Gap junction](#)
- [Pathogenic Escherichia coli infection - EHEC](#)