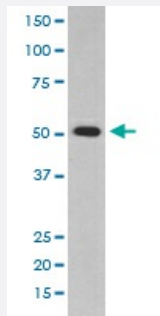


ALDH1A1 monoclonal antibody, clone AHA-1

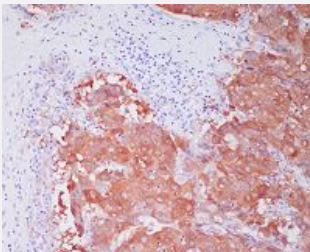
Catalog # MAB19540 Size 100 uL

Applications



Western Blot (Cell lysate)

Western blot analysis of HepG2 cell lysate with ALDH1A1 monoclonal antibody.



Immunohistochemistry (Formalin/PFA-fixed paraffin-embedded sections)

Immunohistochemical staining of paraffin-embedded human liver cancer with ALDH1A1 monoclonal antibody.

Specification

Product Description	Rabbit monoclonal antibody raised against synthetic peptide of human ALDH1A1.
Immunogen	A synthetic peptide corresponding to human ALDH1A1.
Host	Rabbit
Reactivity	Human, Mouse, Rat
Form	Liquid
Purification	Affinity purification
Isotype	IgG

Recommend Usage	Immunocytochemistry (1:50-1:200) Immunofluorescence (1:50-1:200) Immunohistochemistry (1:50-1:200) Immunoprecipitation (1:50) Flow Cytometry (1:50) Western Blot (1:500-1:2000) The optimal working dilution should be determined by the end user.
Storage Buffer	In PBS, pH 7.4, 150mM NaCl, 0.02% sodium azide and 50% glycerol.
Storage Instruction	Store at -20°C for one year. After reconstitution, at 4°C for one month. It can also be aliquotted and stored frozen at -20°C for a longer time. Avoid repeated freezing and thawing.
Note	This product contains sodium azide: a POISONOUS AND HAZARDOUS SUBSTANCE which should be handled by trained staff only.

Applications

- Western Blot (Cell lysate)

Western blot analysis of HepG2 cell lysate with ALDH1A1 monoclonal antibody.

- Immunohistochemistry (Formalin/PFA-fixed paraffin-embedded sections)

Immunohistochemical staining of paraffin-embedded human liver cancer with ALDH1A1 monoclonal antibody.

- Immunocytochemistry

- Immunofluorescence

- Immunoprecipitation

- Flow Cytometry

Gene Info — ALDH1A1

Entrez GeneID	216
Protein Accession#	P00352
Gene Name	ALDH1A1
Gene Alias	ALDC, ALDH-E1, ALDH1, ALDH11, MGC2318, PUMB1, RALDH1
Gene Description	aldehyde dehydrogenase 1 family, member A1

Gene Ontology

[Hyperlink](#)

Gene Summary

This protein belongs to the aldehyde dehydrogenases family of proteins. Aldehyde dehydrogenase is the second enzyme of the major oxidative pathway of alcohol metabolism. Two major liver isoforms of this enzyme, cytosolic and mitochondrial, can be distinguished by their electrophoretic mobilities, kinetic properties, and subcellular localizations. Most Caucasians have two major isozymes, while approximately 50% of Orientals have only the cytosolic isozyme, missing the mitochondrial isozyme. A remarkably higher frequency of acute alcohol intoxication among Orientals than among Caucasians could be related to the absence of the mitochondrial isozyme. This gene encodes a cytosolic isoform, which has a high affinity for aldehydes. [provided by RefSeq]

Other Designations

ALDH class 1|acetaldehyde dehydrogenase 1|aldehyde dehydrogenase 1, soluble|aldehyde dehydrogenase 1A1|aldehyde dehydrogenase, liver cytosolic|retinal dehydrogenase 1|retinaldehyde dehydrogenase 1

Pathway

- [Metabolic pathways](#)
- [Retinol metabolism](#)

Disease

- [Alcoholism](#)
- [Breast cancer](#)
- [Breast Neoplasms](#)
- [Carcinoma](#)
- [Chromosome Deletion](#)
- [Cleft Lip](#)
- [Cleft Palate](#)
- [Disease Models](#)
- [Drug Toxicity](#)
- [Genetic Predisposition to Disease](#)
- [Kidney Failure](#)
- [Lymphoma](#)

- [Neoplasms](#)
- [Ovarian cancer](#)
- [Ovarian Neoplasms](#)
- [Schizophrenia](#)
- [Tobacco Use Disorder](#)