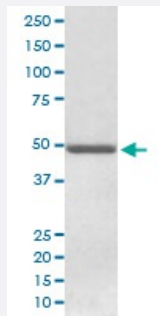


ADFP monoclonal antibody, clone AAll-16

Catalog # MAB19530 Size 100 uL

Applications



Western Blot (Cell lysate)

Western blot analysis of HepG2 cell lysate with ADFP monoclonal antibody.

Specification

Product Description Rabbit monoclonal antibody raised against synthetic peptide of human ADFP.

Immunogen A synthetic peptide corresponding to human ADFP.

Host Rabbit

Reactivity Human, Mouse, Rat

Form Liquid

Purification Affinity purification

Isotype IgG

Recommend Usage
 Immunocytochemistry (1:50-1:200)
 Immunofluorescence (1:50-1:200)
 Flow Cytometry (1:50)
 Western Blot (1:500-1:2000)
 The optimal working dilution should be determined by the end user.

Storage Buffer In PBS, pH 7.4, 150mM NaCl, 0.02% sodium azide and 50% glycerol.

Storage Instruction

Store at -20°C for one year. After reconstitution, at 4°C for one month. It can also be aliquotted and stored frozen at -20°C for a longer time. Avoid repeated freezing and thawing.

Note

This product contains sodium azide: a POISONOUS AND HAZARDOUS SUBSTANCE which should be handled by trained staff only.

Applications

- Western Blot (Cell lysate)

Western blot analysis of HepG2 cell lysate with ADFP monoclonal antibody.

- Immunocytochemistry

- Immunofluorescence

- Flow Cytometry

Gene Info — ADFP

Entrez GeneID[123](#)**Protein Accession#**[Q99541](#)**Gene Name**

ADFP

Gene Alias

ADRP, MGC10598

Gene Description

adipose differentiation-related protein

Omim ID[103195](#)**Gene Ontology**[Hyperlink](#)**Gene Summary**

Adipocyte differentiation-related protein is associated with the globule surface membrane material. This protein is a major constituent of the globule surface. Increase in mRNA levels is one of the earliest indications of adipocyte differentiation [provided by RefSeq]

Other Designations

OTTHUMP00000021107|adipophilin