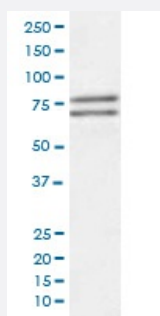


# ADAM10 monoclonal antibody, clone AAIC-1

Catalog # MAB19528      Size 100 uL

## Applications



### Western Blot (Cell lysate)

Western blot analysis of Jurkat cell lysate with ADAM10 monoclonal antibody.

## Specification

<b>Product Description</b>	Rabbit monoclonal antibody raised against synthetic peptide of human ADAM10.
<b>Immunogen</b>	A synthetic peptide corresponding to human ADAM10.
<b>Host</b>	Rabbit
<b>Reactivity</b>	Human, Mouse, Rat
<b>Form</b>	Liquid
<b>Purification</b>	Affinity purification
<b>Isotype</b>	IgG
<b>Recommend Usage</b>	Immunoprecipitation (1:50) Western Blot (1:500-1:2000) The optimal working dilution should be determined by the end user.
<b>Storage Buffer</b>	In PBS, pH 7.4, 150mM NaCl, 0.02% sodium azide and 50% glycerol.
<b>Storage Instruction</b>	Store at -20°C for one year. After reconstitution, at 4°C for one month. It can also be aliquotted and stored frozen at -20°C for a longer time. Avoid repeated freezing and thawing.

## Note

This product contains sodium azide: a POISONOUS AND HAZARDOUS SUBSTANCE which should be handled by trained staff only.

## Applications

- Western Blot (Cell lysate)

Western blot analysis of Jurkat cell lysate with ADAM10 monoclonal antibody.

- Immunoprecipitation

## Gene Info — ADAM10

Entrez GeneID [102](#)

Protein Accession# [O14672](#)

Gene Name ADAM10

Gene Alias AD10, CD156c, HsT18717, MADM, kuz

Gene Description ADAM metallopeptidase domain 10

Omim ID [602192](#)

Gene Ontology [Hyperlink](#)

**Gene Summary** Members of the ADAM family are cell surface proteins with a unique structure possessing both potential adhesion and protease domains. This gene encodes an ADAM family member that cleaves many proteins including TNF-alpha and E-cadherin. [provided by RefSeq]

**Other Designations** a disintegrin and metalloprotease domain 10|a disintegrin and metalloproteinase domain 10|kuzbanian

## Pathway

- [Epithelial cell signaling in Helicobacter pylori infection](#)

## Disease

- [Alzheimer disease](#)

- [Cardiovascular Diseases](#)
- [Creutzfeldt-Jakob Syndrome](#)
- [Diabetes Mellitus](#)
- [Disease Progression](#)
- [Disease Susceptibility](#)
- [Edema](#)
- [Genetic Predisposition to Disease](#)
- [HIV Infections](#)
- [Multiple Sclerosis](#)
- [Narcolepsy](#)