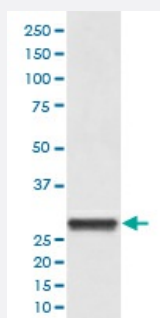


YWHAB monoclonal antibody, clone HHO-25

Catalog # MAB19504 Size 100 uL

Applications



Western Blot (Cell lysate)

Western blot analysis of HeLa cell lysate with YWHAB monoclonal antibody.

Specification

Product Description Rabbit monoclonal antibody raised against synthetic peptide of human YWHAB.

Immunogen A synthetic peptide corresponding to human YWHAB.

Host Rabbit

Reactivity Human, Mouse, Rat

Form Liquid

Purification Affinity purification

Isotype IgG

Recommend Usage
Immunohistochemistry (1:50-1:200)
Flow Cytometry (1:50)
Western Blot (1:500-1:1000)
The optimal working dilution should be determined by the end user.

Storage Buffer In PBS, pH 7.4, 150mM NaCl, 0.02% sodium azide and 50% glycerol.

Storage Instruction Store at -20°C for one year. After reconstitution, at 4°C for one month. It can also be aliquotted and stored frozen at -20°C for a longer time. Avoid repeated freezing and thawing.

Note

This product contains sodium azide: a POISONOUS AND HAZARDOUS SUBSTANCE which should be handled by trained staff only.

Applications

- Western Blot (Cell lysate)

Western blot analysis of HeLa cell lysate with YWHAB monoclonal antibody.

- Immunohistochemistry (Formalin/PFA-fixed paraffin-embedded sections)

- Flow Cytometry

Gene Info — YWHAB

Entrez GeneID	7529
---------------	----------------------

Protein Accession#	P31946
--------------------	------------------------

Gene Name	YWHAB
-----------	-------

Gene Alias	GW128, HS1, KCIP-1
------------	--------------------

Gene Description	tyrosine 3-monooxygenase/tryptophan 5-monooxygenase activation protein, beta polypeptide
------------------	--

Omim ID	601289
---------	------------------------

Gene Ontology	Hyperlink
---------------	---------------------------

Gene Summary	This gene encodes a protein belonging to the 14-3-3 family of proteins, members of which mediate signal transduction by binding to phosphoserine-containing proteins. This highly conserved protein family is found in both plants and mammals. The encoded protein has been shown to interact with RAF1 and CDC25 phosphatases, suggesting that it may play a role in linking mitogenic signaling and the cell cycle machinery. Two transcript variants, which encode the same protein, have been identified for this gene. [provided by RefSeq]
--------------	---

Other Designations	14-3-3 protein beta/alpha OTTHUMP00000031075 OTTHUMP00000031076 brain protein 14-3-3, beta isoform protein 1054 protein kinase C inhibitor protein-1
--------------------	--

Pathway

- [Cell cycle](#)

- [Neurotrophin signaling pathway](#)

Disease

- [Autistic Disorder](#)