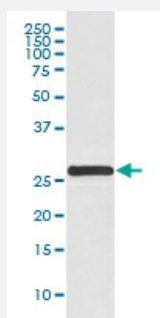


# YWHAG monoclonal antibody, clone HAH-25

Catalog # MAB19503      Size 100 uL

## Applications



### Western Blot (Cell lysate)

Western blot analysis of HeLa cell lysate with YWHAG monoclonal antibody.

## Specification

<b>Product Description</b>	Rabbit monoclonal antibody raised against synthetic peptide of human YWHAG.
<b>Immunogen</b>	A synthetic peptide corresponding to human YWHAG.
<b>Host</b>	Rabbit
<b>Reactivity</b>	Human, Mouse, Rat
<b>Form</b>	Liquid
<b>Purification</b>	Affinity purification
<b>Isotype</b>	IgG
<b>Recommend Usage</b>	Flow Cytometry (1:50) Western Blot (1:1000-1:2000) The optimal working dilution should be determined by the end user.
<b>Storage Buffer</b>	In PBS, pH 7.4, 150mM NaCl, 0.02% sodium azide and 50% glycerol.
<b>Storage Instruction</b>	Store at -20°C for one year. After reconstitution, at 4°C for one month. It can also be aliquotted and stored frozen at -20°C for a longer time. Avoid repeated freezing and thawing.

## Note

This product contains sodium azide: a POISONOUS AND HAZARDOUS SUBSTANCE which should be handled by trained staff only.

## Applications

- Western Blot (Cell lysate)

Western blot analysis of HeLa cell lysate with YWHAG monoclonal antibody.

- Flow Cytometry

## Gene Info — YWHAG

Entrez GeneID [7532](#)

Protein Accession# [P61981](#)

Gene Name YWHAG

Gene Alias 14-3-3GAMMA

Gene Description tyrosine 3-monooxygenase/tryptophan 5-monooxygenase activation protein, gamma polypeptide

Omim ID [605356](#)

Gene Ontology [Hyperlink](#)

**Gene Summary** This gene product belongs to the 14-3-3 family of proteins which mediate signal transduction by binding to phosphoserine-containing proteins. This highly conserved protein family is found in both plants and mammals, and this protein is 100% identical to the rat ortholog. It is induced by growth factors in human vascular smooth muscle cells, and is also highly expressed in skeletal and heart muscles, suggesting an important role for this protein in muscle tissue. It has been shown to interact with RAF1 and protein kinase C, proteins involved in various signal transduction pathways. [provided by RefSeq]

Other Designations 14-3-3 gamma

## Pathway

- [Cell cycle](#)
- [Neurotrophin signaling pathway](#)