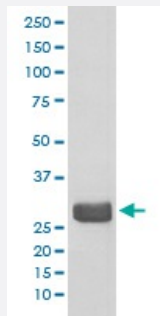


# YWHAE monoclonal antibody, clone HHD-25

Catalog # MAB19502      Size 100 uL

## Applications



### Western Blot (Cell lysate)

Western blot analysis of 293T cell lysate with YWHAE monoclonal antibody.

## Specification

**Product Description** Rabbit monoclonal antibody raised against synthetic peptide of human YWHAE.

**Immunogen** A synthetic peptide corresponding to human YWHAE.

**Host** Rabbit

**Reactivity** Human, Mouse, Rat

**Form** Liquid

**Purification** Affinity purification

**Isotype** IgG

**Recommend Usage**

- Immunocytochemistry (1:50-1:200)
- Immunofluorescence (1:50-1:200)
- Immunohistochemistry (1:50-1:200)
- Flow Cytometry (1:50)
- Western Blot (1:1000-1:2000)
- The optimal working dilution should be determined by the end user.

**Storage Buffer** In PBS, pH 7.4, 150mM NaCl, 0.02% sodium azide and 50% glycerol.

**Storage Instruction**

Store at -20°C for one year. After reconstitution, at 4°C for one month. It can also be aliquotted and stored frozen at -20°C for a longer time. Avoid repeated freezing and thawing.

**Note**

This product contains sodium azide: a POISONOUS AND HAZARDOUS SUBSTANCE which should be handled by trained staff only.

## Applications

- Western Blot (Cell lysate)

Western blot analysis of 293T cell lysate with YWHAE monoclonal antibody.

- Immunohistochemistry (Formalin/PFA-fixed paraffin-embedded sections)

- Immunocytochemistry

- Immunofluorescence

- Flow Cytometry

## Gene Info — YWHAE

**Entrez GeneID**[7531](#)**Protein Accession#**[P62258](#)**Gene Name**

YWHAE

**Gene Alias**

14-3-3E, FLJ45465, KCIP-1, MDCR, MDS

**Gene Description**

tyrosine 3-monooxygenase/tryptophan 5-monooxygenase activation protein, epsilon polypeptide

**Omim ID**[247200](#) [605066](#)**Gene Ontology**[Hyperlink](#)**Gene Summary**

This gene product belongs to the 14-3-3 family of proteins which mediate signal transduction by binding to phosphoserine-containing proteins. This highly conserved protein family is found in both plants and mammals, and this protein is 100% identical to the mouse ortholog. It interacts with CD C25 phosphatases, RAF1 and IRS1 proteins, suggesting its role in diverse biochemical activities related to signal transduction, such as cell division and regulation of insulin sensitivity. It has also been implicated in the pathogenesis of small cell lung cancer. Two transcript variants, one protein-coding and the other non-protein-coding, have been found for this gene. [provided by RefSeq]

**Other Designations**

14-3-3 epsilon|mitochondrial import stimulation factor L subunit|protein kinase C inhibitor protein-1|tyrosine 3/tryptophan 5 -monooxygenase activation protein, epsilon polypeptide

**Pathway**

- [Cell cycle](#)
- [Neurotrophin signaling pathway](#)

**Disease**

- [Genetic Predisposition to Disease](#)