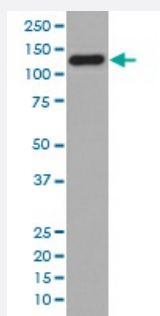


COL17A1 monoclonal antibody, clone AA-3

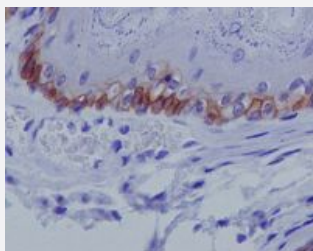
Catalog # MAB19492 Size 100 uL

Applications



Western Blot (Cell lysate)

Western blot analysis of human skin lysate with COL17A1 monoclonal antibody.



Immunohistochemistry (Formalin/PFA-fixed paraffin-embedded sections)

Immunohistochemical staining of paraffin-embedded mouse skin with COL17A1 monoclonal antibody.

Specification

Product Description	Rabbit monoclonal antibody raised against synthetic peptide of human COL17A1.
Immunogen	A synthetic peptide corresponding to human COL17A1.
Host	Rabbit
Reactivity	Human, Mouse, Rat
Form	Liquid
Purification	Affinity purification
Isotype	IgG

Recommend Usage	Immunocytochemistry (1:50-1:200) Immunofluorescence (1:50-1:200) Immunohistochemistry (1:50-1:200) Immunoprecipitation (1:30) Western Blot (1:500-1:2000) The optimal working dilution should be determined by the end user.
Storage Buffer	In PBS, pH 7.4, 150mM NaCl, 0.02% sodium azide and 50% glycerol.
Storage Instruction	Store at -20°C for one year. After reconstitution, at 4°C for one month. It can also be aliquotted and stored frozen at -20°C for a longer time. Avoid repeated freezing and thawing.
Note	This product contains sodium azide: a POISONOUS AND HAZARDOUS SUBSTANCE which should be handled by trained staff only.

Applications

- Western Blot (Cell lysate)

Western blot analysis of human skin lysate with COL17A1 monoclonal antibody.

- Immunohistochemistry (Formalin/PFA-fixed paraffin-embedded sections)

Immunohistochemical staining of paraffin-embedded mouse skin with COL17A1 monoclonal antibody.

- Immunocytochemistry

- Immunofluorescence

- Immunoprecipitation

Gene Info — COL17A1

Entrez GeneID	1308
Protein Accession#	Q9UMD9
Gene Name	COL17A1
Gene Alias	BA16H23.2, BP180, BPAG2, FLJ60881, KIAA0204, LAD-1
Gene Description	collagen, type XVII, alpha 1
Omim ID	113811 226650
Gene Ontology	Hyperlink

Gene Summary

This gene encodes the alpha chain of type XVII collagen. Unlike most collagens, collagen XVII is a transmembrane protein. Collagen XVII is a structural component of hemidesmosomes, multiprotein complexes at the dermal-epidermal basement membrane zone that mediate adhesion of keratinocytes to the underlying membrane. Mutations in this gene are associated with both generalized atrophic benign and junctional epidermolysis bullosa. Two homotrimeric forms of type XVII collagen exist. The full length form is the transmembrane protein. A soluble form, referred to as either ectodomain or LAD-1, is generated by proteolytic processing of the full length form. [provided by RefSeq]

Other Designations

OTTHUMP00000020422|alpha 1 type XVII collagen|bA16H23.2 (collagen, type XVII, alpha 1 (BP 180))|bullous pemphigoid antigen 2 (180kD)|collagen XVII, alpha-1 polypeptide

Disease

- [Alzheimer Disease](#)
- [Chronic Disease](#)
- [Genetic Predisposition to Disease](#)
- [Pemphigoid](#)
- [Periodontitis](#)
- [Tobacco Use Disorder](#)