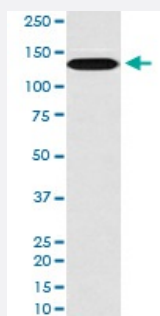


MYLK monoclonal antibody, clone G-13

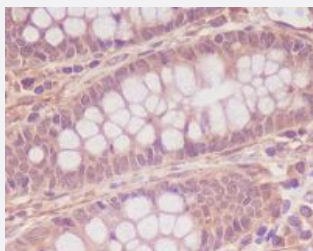
Catalog # MAB19490 Size 100 uL

Applications



Western Blot (Cell lysate)

Western blot analysis of HUVEC cell lysate with MYLK monoclonal antibody.



Immunohistochemistry (Formalin/PFA-fixed paraffin-embedded sections)

Immunohistochemical staining of paraffin-embedded human colon with MYLK monoclonal antibody.

Specification

Product Description	Rabbit monoclonal antibody raised against synthetic peptide of human MYLK.
Immunogen	A synthetic peptide corresponding to human MYLK.
Host	Rabbit
Reactivity	Human, Mouse, Rat
Form	Liquid
Purification	Affinity purification
Isotype	IgG

Recommend Usage	Immunocytochemistry (1:50-1:200) Immunofluorescence (1:50-1:200) Immunohistochemistry (1:50-1:200) Flow Cytometry (1:50) Western Blot (1:500-1:2000) The optimal working dilution should be determined by the end user.
Storage Buffer	In PBS, pH 7.4, 150mM NaCl, 0.02% sodium azide and 50% glycerol.
Storage Instruction	Store at -20°C for one year. After reconstitution, at 4°C for one month. It can also be aliquotted and stored frozen at -20°C for a longer time. Avoid repeated freezing and thawing.
Note	This product contains sodium azide: a POISONOUS AND HAZARDOUS SUBSTANCE which should be handled by trained staff only.

Applications

- Western Blot (Cell lysate)

Western blot analysis of HUVEC cell lysate with MYLK monoclonal antibody.

- Immunohistochemistry (Formalin/PFA-fixed paraffin-embedded sections)

Immunohistochemical staining of paraffin-embedded human colon with MYLK monoclonal antibody.

- Immunocytochemistry

- Immunofluorescence

- Flow Cytometry

Gene Info — MYLK

Entrez GeneID	4638
Protein Accession#	Q15746
Gene Name	MYLK
Gene Alias	DKFZp686I10125, FLJ12216, KRP, MLCK, MLCK1, MLCK108, MLCK210, MSTP083, MYLK1, smMLCK
Gene Description	myosin light chain kinase
Omim ID	600922

Gene Ontology

[Hyperlink](#)

Gene Summary

This gene, a muscle member of the immunoglobulin gene superfamily, encodes myosin light chain kinase which is a calcium/calmodulin dependent enzyme. This kinase phosphorylates myosin regulatory light chains to facilitate myosin interaction with actin filaments to produce contractile activity. This gene encodes both smooth muscle and nonmuscle isoforms. In addition, using a separate promoter in an intron in the 3' region, it encodes telokin, a small protein identical in sequence to the C-terminus of myosin light chain kinase, that is independently expressed in smooth muscle and functions to stabilize unphosphorylated myosin filaments. A pseudogene is located on the p arm of chromosome 3. Four transcript variants that produce four isoforms of the calcium/calmodulin dependent enzyme have been identified as well as two transcripts that produce two isoforms of telokin. Additional variants have been identified but lack full length transcripts. [provided by RefSeq]

Other Designations

OTTHUMP00000180642|OTTHUMP00000180643|myosin, light polypeptide kinase|smooth muscle myosin light chain kinase

Pathway

- [Calcium signaling pathway](#)
- [Focal adhesion](#)
- [Regulation of actin cytoskeleton](#)
- [Vascular smooth muscle contraction](#)

Disease

- [Asthma](#)
- [Cardiovascular Diseases](#)
- [Coronary Artery Disease](#)
- [Critical Illness](#)
- [Diabetes Mellitus](#)
- [Edema](#)
- [Genetic Predisposition to Disease](#)
- [Heart Defects](#)
- [Hypertension](#)
- [Kidney Failure](#)

- [Puerperal Disorders](#)
- [Respiratory Distress Syndrome](#)
- [Rhabdomyolysis](#)
- [Sepsis](#)
- [Streptococcal Infections](#)
- [Wounds and Injuries](#)