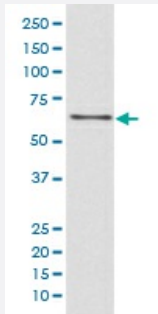


# CDC45L monoclonal antibody, clone AD-3

Catalog # MAB19489      Size 100 uL

## Applications



### Western Blot (Cell lysate)

Western blot analysis of Jurkat cell lysate with CDC45L monoclonal antibody.

## Specification

**Product Description** Rabbit monoclonal antibody raised against synthetic peptide of human CDC45L.

**Immunogen** A synthetic peptide corresponding to human CDC45L.

**Host** Rabbit

**Reactivity** Human, Mouse, Rat

**Form** Liquid

**Purification** Affinity purification

**Isotype** IgG

**Recommend Usage**

- Immunocytochemistry (1:50-1:200)
- Immunofluorescence (1:50-1:200)
- Immunohistochemistry (1:50-1:200)
- Flow Cytometry (1:50)
- Western Blot (1:500-1:2000)
- The optimal working dilution should be determined by the end user.

**Storage Buffer** In PBS, pH 7.4, 150mM NaCl, 0.02% sodium azide and 50% glycerol.

**Storage Instruction**

Store at -20°C for one year. After reconstitution, at 4°C for one month. It can also be aliquotted and stored frozen at -20°C for a longer time. Avoid repeated freezing and thawing.

**Note**

This product contains sodium azide: a POISONOUS AND HAZARDOUS SUBSTANCE which should be handled by trained staff only.

## Applications

- Western Blot (Cell lysate)

Western blot analysis of Jurkat cell lysate with CDC45L monoclonal antibody.

- Immunohistochemistry (Formalin/PFA-fixed paraffin-embedded sections)

- Immunocytochemistry

- Immunofluorescence

- Flow Cytometry

## Gene Info — CDC45L

**Entrez GeneID**[8318](#)**Protein Accession#**[O75419](#)**Gene Name**

CDC45L

**Gene Alias**

CDC45, CDC45L2, PORC-PI-1

**Gene Description**

CDC45 cell division cycle 45-like (S. cerevisiae)

**Omim ID**[603465](#)**Gene Ontology**[Hyperlink](#)**Gene Summary**

The protein encoded by this gene was identified by its strong similarity with *Saccharomyces cerevisiae* Cdc45, an essential protein required to the initiation of DNA replication. Cdc45 is a member of the highly conserved multiprotein complex including Cdc6/Cdc18, the minichromosome maintenance proteins (MCMs) and DNA polymerase, which is important for early steps of DNA replication in eukaryotes. This protein has been shown to interact with MCM7 and DNA polymerase alpha. Studies of the similar gene in *Xenopus* suggested that this protein play a pivotal role in the loading of DNA polymerase alpha onto chromatin. Multiple polyadenylation sites of this gene are reported. [provided by RefSeq]

**Other Designations**

CDC45 (cell division cycle 45, S.cerevisiae, homolog)-like|CDC45-like|CDC45-related protein|cell division cycle 45-like 2|human CDC45

**Pathway**

- [Cell cycle](#)

**Disease**

- [Colorectal Neoplasms](#)
- [Disease Progression](#)
- [Genetic Predisposition to Disease](#)
- [Tobacco Use Disorder](#)