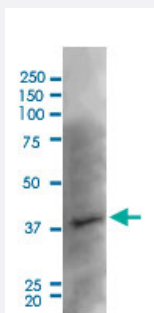


# Kcnj8 monoclonal antibody, clone S366-60 (ATTO 390)

Catalog # MAB19468

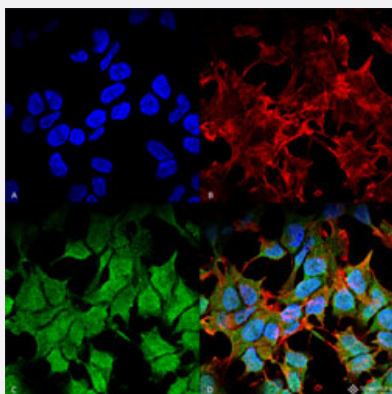
Size 100 ug

## Applications



### Western Blot (Tissue lysate)

Western Blot (Tissue lysate) analysis of rat brain.



### Immunocytochemistry

Immunocytochemical staining of SK-N-BE cell line (A) DAPI (blue) nuclear stain, (B) Phalloidin Texas Red F-Actin stain, (C) Kcnj8 Antibody and (D) Composite.

## Specification

<b>Product Description</b>	Mouse monoclonal antibody raised against partial recombinant rat Kcnj8.
<b>Immunogen</b>	Recombinant protein corresponding to amino acids 306-424 at cytoplasmic C-terminus region of rat Kcnj8.
<b>Host</b>	Mouse
<b>Reactivity</b>	Human, Mouse, Rat
<b>Specificity</b>	This antibody detects ~45kDa.

Form	Liquid
Conjugation	ATTO 390
Purification	Protein G purification
Isotype	IgG2a
Recommend Usage	Immunocytochemistry (1:100) Immunofluorescence (1:100) Immunohistochemistry (Formalin/PFA-fixed paraffin-embedded sections) Western Blot (1:1000) The optimal working dilution should be determined by the end user.
Storage Buffer	In PBS, pH 7.4 (50% glycerol, 0.09% sodium azide).
Storage Instruction	Store at -20°C.
Note	This product contains sodium azide: a POISONOUS AND HAZARDOUS SUBSTANCE which should be handled by trained staff only.

## Applications

- Western Blot (Tissue lysate)

Western Blot (Tissue lysate) analysis of rat brain.

- Immunohistochemistry (Formalin/PFA-fixed paraffin-embedded sections)

- Immunocytochemistry

Immunocytochemical staining of SK-N-BE cell line (A) DAPI (blue) nuclear stain, (B) Phalloidin Texas Red F-Actin stain, (C) Kcnj8 Antibody and (D) Composite.

- Immunofluorescence

## Gene Info — Kcnj8

Entrez GeneID	<a href="#">25472</a>
Protein Accession#	<a href="#">Q63664</a>
Gene Name	Kcnj8
Gene Alias	Kir6.1, UKATP1, uKATP-1

<b>Gene Description</b>	potassium inwardly-rectifying channel, subfamily J, member 8
<b>Gene Ontology</b>	<a href="#">Hyperlink</a>
<b>Gene Summary</b>	subfamily J
<b>Other Designations</b>	Inwardly rectifying potassium channel gene subfamily J-8 (ATP sensitive) Inwardly rectifying potassium channel gene, subfamily J-8 (ATP sensitive)