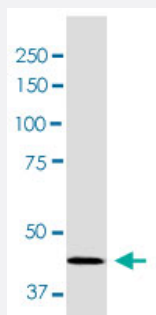


Scn3b monoclonal antibody, clone S396-29 (ATTO 488)

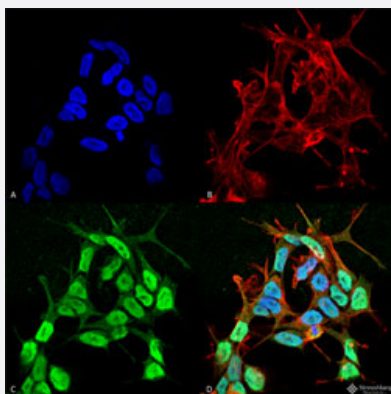
Catalog # MAB19457 Size 100 ug

Applications



Western Blot (Tissue lysate)

Western Blot (Tissue lysate) analysis of mouse brain.



Immunocytochemistry

Immunocytochemical staining of SK-N-BE cell line (A) DAPI (blue) nuclear stain, (B) Phalloidin Texas Red F-Actin stain, (C) Scn3b Antibody and (D) Composite.

Specification

Product Description	Mouse monoclonal antibody raised against full length recombinant rat Scn3b.
Immunogen	Recombinant protein corresponding to amino acids 1-215 at C-terminus region of rat Scn3b.
Host	Mouse
Reactivity	Human, Mouse, Rat
Specificity	This antibody detects ~40kDa. Does not cross react with NavBeta1, Navbeta2, or Navbeta4.
Form	Liquid

Conjugation	ATTO 488
Purification	Protein G purification
Isotype	IgG2b
Recommend Usage	Immunocytochemistry (1:100) Immunofluorescence (1:100) Western Blot (1:1000) The optimal working dilution should be determined by the end user.
Storage Buffer	In PBS, pH 7.4 (50% glycerol, 0.09% sodium azide).
Storage Instruction	Store at -20°C.
Note	This product contains sodium azide: a POISONOUS AND HAZARDOUS SUBSTANCE which should be handled by trained staff only.

Applications

- Western Blot (Tissue lysate)

Western Blot (Tissue lysate) analysis of mouse brain.

- Immunocytochemistry

Immunocytochemical staining of SK-N-BE cell line (A) DAPI (blue) nuclear stain, (B) Phalloidin Texas Red F-Actin stain, (C) Scn3b Antibody and (D) Composite.

- Immunofluorescence

Gene Info — Scn3b

Entrez GeneID	245956
Protein Accession#	Q9JK00
Gene Name	Scn3b
Gene Alias	Scnb3
Gene Description	sodium channel, voltage-gated, type III, beta
Gene Ontology	Hyperlink
Gene Summary	sodium channel

Other Designationssodium channel beta 3 subunit|voltage-gated sodium channel beta-3 subunit
