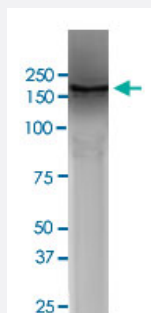


# SPTBN4 monoclonal antibody, clone S393-2 (RPE)

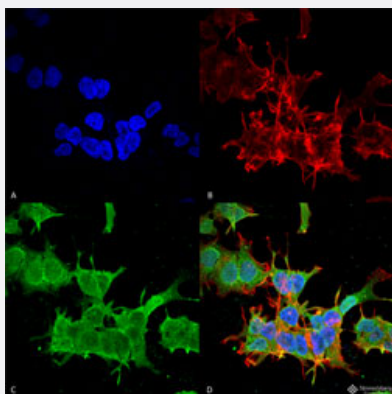
Catalog # MAB19443      Size 100 ug

## Applications



### Western Blot

Western Blot analysis of COS-Beta-4-Spectrin-His.



### Immunocytochemistry

Immunocytochemical staining of SK-N-BE cell line (A) DAPI (blue) nuclear stain, (B) Phalloidin Texas Red F-Actin stain, (C) SPTBN4 Antibody and (D) Composite.

## Specification

<b>Product Description</b>	Mouse monoclonal antibody raised against partial recombinant human SPTBN4.
<b>Immunogen</b>	Recombinant protein corresponding to amino acids 1621-1832 at C-terminus repeats 14 to 15 of human Beta4-spectrin.
<b>Host</b>	Mouse
<b>Reactivity</b>	Human, Mouse, Rat
<b>Specificity</b>	This antibody detects ~200kDa. Does not cross react with other Beta-spectrins.

Form	Liquid
Conjugation	RPE
Purification	Protein G purification
Isotype	IgG1
Recommend Usage	Immunocytochemistry Immunofluorescence Immunohistochemistry (Formalin/PFA-fixed paraffin-embedded sections) Western Blot (1:1000) The optimal working dilution should be determined by the end user.
Storage Buffer	In PBS, pH 7.4 (50% glycerol, 0.09% sodium azide).
Storage Instruction	Store at -20°C.
Note	This product contains sodium azide: a POISONOUS AND HAZARDOUS SUBSTANCE which should be handled by trained staff only.

## Applications

- Western Blot

Western Blot analysis of COS-Beta-4-Spectrin-His.

- Immunohistochemistry (Formalin/PFA-fixed paraffin-embedded sections)

- Immunocytochemistry

Immunocytochemical staining of SK-N-BE cell line (A) DAPI (blue) nuclear stain, (B) Phalloidin Texas Red F-Actin stain, (C) SPTBN4 Antibody and (D) Composite.

- Immunofluorescence

## Gene Info — SPTBN4

Entrez GeneID	<a href="#">57731</a>
Protein Accession#	<a href="#">Q9H254</a>
Gene Name	SPTBN4
Gene Alias	KIAA1642, QV, SPNB4, SPTBN3

Gene Description	spectrin, beta, non-erythrocytic 4
Omim ID	<a href="#">606214</a>
Gene Ontology	<a href="#">Hyperlink</a>
Gene Summary	<p>Spectrin is an actin crosslinking and molecular scaffold protein that links the plasma membrane to the actin cytoskeleton, and functions in the determination of cell shape, arrangement of transmembrane proteins, and organization of organelles. It is composed of two antiparallel dimers of alpha- and beta- subunits. This gene is one member of a family of beta-spectrin genes. The encoded protein localizes to the nuclear matrix, PML nuclear bodies, and cytoplasmic vesicles. A highly similar gene in the mouse is required for localization of specific membrane proteins in polarized regions of neurons. Multiple transcript variants encoding different isoforms have been found for this gene. [ provided by RefSeq</p>
Other Designations	betaIV spectrin

## Disease

- [Cerebral Hemorrhage](#)
- [Genetic Predisposition to Disease](#)
- [Hypertension](#)
- [Intracranial Hemorrhages](#)
- [Stroke](#)
- [Subarachnoid Hemorrhage](#)
- [Tobacco Use Disorder](#)