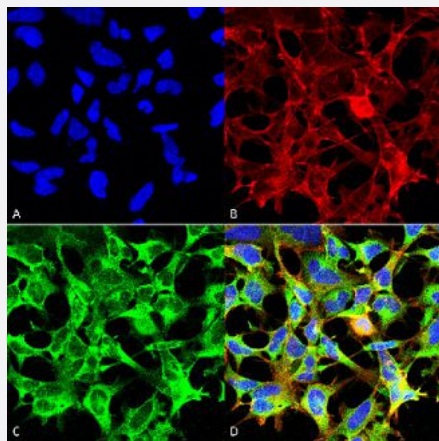


Sulfotyrosine monoclonal antibody, clone 7C5 (ATTO 488)

Catalog # MAB19354 Size 100 ug

Applications



Immunocytochemistry

Immunocytochemical staining of HEK293 with Sulfotyrosine monoclonal antibody, clone 7C5 (Cat # MAB19354). (A) DAPI (blue) nuclear stain, (B) Phalloidin Alex Fluor 633 F-Actin stain, (C) Sulfotyrosine Antibody and (D) Composite.

Specification

Product Description	Mouse monoclonal antibody raised against synthetic Sulfotyrosine.
Immunogen	Synthetic Sulfotyrosine conjugated to Keyhole Limpet Hemocyanin (KLH).
Host	Mouse
Reactivity	Human
Form	Liquid
Conjugation	ATTO 488
Purification	Protein G Purified
Isotype	IgG1

Recommend Usage	ELISA (1:1000) Immunocytochemistry (1:50) Immunofluorescence (1:50) Western Blot (1:1000) The optimal working dilution should be determined by the end user.
Storage Buffer	In PBS, pH 7.4 (50% glycerol, 0.09% sodium azide).
Storage Instruction	Store at -20°C.
Note	This product contains sodium azide: a POISONOUS AND HAZARDOUS SUBSTANCE which should be handled by trained staff only.

Applications

- Western Blot
- Immunocytochemistry
Immunocytochemical staining of HEK293 with Sulfotyrosine monoclonal antibody, clone 7C5 (Cat # MAB19354). (A) DAPI (blue) nuclear stain, (B) Phalloidin Alex Fluor 633 F-Actin stain, (C) Sulfotyrosine Antibody and (D) Composite.
- Immunofluorescence
- Enzyme-linked Immunoabsorbent Assay