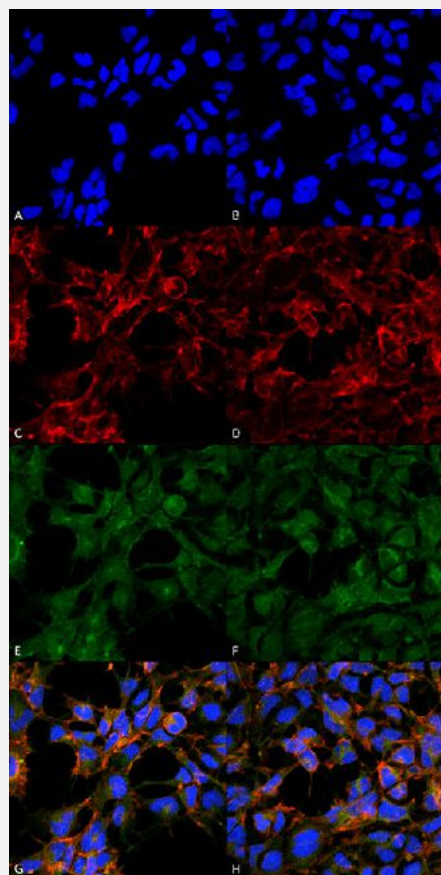


Malondialdehyde monoclonal antibody, clone 6H6 (ATTO 594)

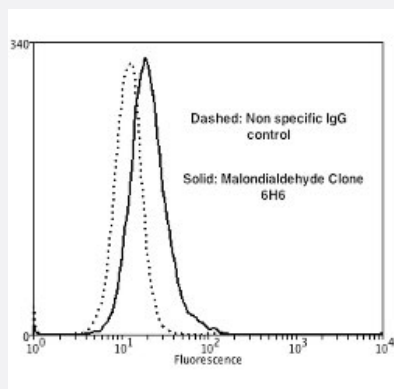
Catalog # MAB19308 Size 100 ug

Applications



Immunocytochemistry

Immunocytochemical staining of HEK293 with Malondialdehyde monoclonal antibody, clone 6H6 (Cat # MAB19308). (A, B) DAPI (blue) nuclear stain, (C, D) Phalloidin Alex Fluor 633 F-Actin stain, (E, F) Malondialdehyde Antibody and (G, H) Composite. (A, C, E, G) Untreated and (B, D, F, H) Cells cultured overnight with 50 uM H₂O₂.



Flow Cytometry

Flow cytometric analysis of SH-SY5Y with Malondialdehyde monoclonal antibody, clone 6H6 (Cat # MAB19308).

Specification

Product Description	Mouse monoclonal antibody raised against synthetic Malondialdehyde (MDA).
Immunogen	Synthetic Malondialdehyde modified Keyhole Limpet Hemocyanin (KLH).
Host	Mouse
Reactivity	Human
Form	Liquid
Conjugation	ATTO 594
Purification	Protein G Purified
Isotype	IgG1
Recommend Usage	ELISA (1:1000) Flow Cytometry (1:50) Immunocytochemistry (1:50) Immunofluorescence (1:50) Western Blot (1:1000) The optimal working dilution should be determined by the end user.
Storage Buffer	In PBS, pH 7.4 (50% glycerol, 0.09% sodium azide).
Storage Instruction	Store at -20°C.
Note	This product contains sodium azide: a POISONOUS AND HAZARDOUS SUBSTANCE which should be handled by trained staff only.

Applications

- Western Blot

- Immunocytochemistry

Immunocytochemical staining of HEK293 with Malondialdehyde monoclonal antibody, clone 6H6 (Cat # MAB19308). (A, B) DAPI (blue) nuclear stain, (C, D) Phalloidin Alex Fluor 633 F-Actin stain, (E, F) Malondialdehyde Antibody and (G, H) Composite. (A, C, E, G) Untreated and (B, D, F, H) Cells cultured overnight with 50 μ M H₂O₂.

- Immunofluorescence

- Enzyme-linked Immunoabsorbent Assay

- Flow Cytometry

Flow cytometric analysis of SH-SY5Y with Malondialdehyde monoclonal antibody, clone 6H6 (Cat # MAB19308).