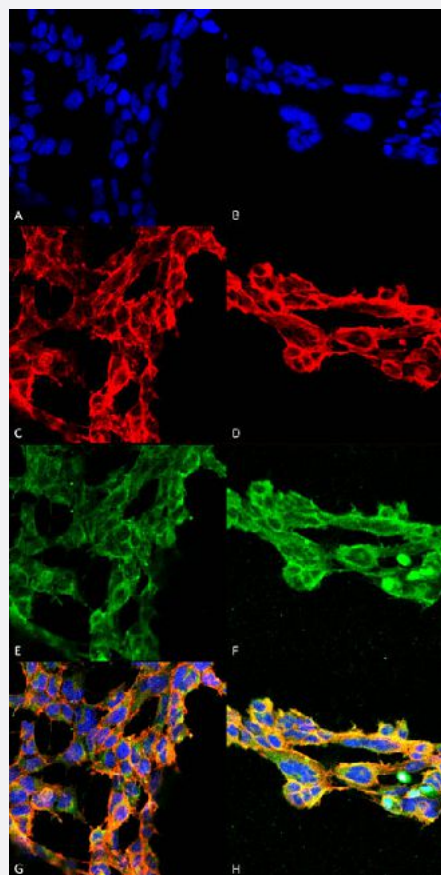


# 7-Ketocholesterol monoclonal antibody, clone 7E1 (PerCP)

Catalog # MAB19303      Size 100 ug

## Applications



### Immunocytochemistry

Immunocytochemical staining of HEK293 with 7-Ketocholesterol monoclonal antibody, clone 7E1 (Cat # MAB19303). (A, B) DAPI (blue) nuclear stain, (C, D) Phalloidin Alex Fluor 633 F-Actin stain, (E, F) 7-Ketocholesterol Antibody and (G, H) Composite. (A, C, E, G) Untreated and (B, D, F, H) Cells cultured overnight with 50 uM H<sub>2</sub>O<sub>2</sub>.

## Specification

<b>Product Description</b>	Mouse monoclonal antibody raised against synthetic 7-Ketocholesterol (7-KC).
<b>Immunogen</b>	Synthetic 7-Ketocholesterol conjugated to Keyhole Limpet Hemocyanin (KLH).
<b>Host</b>	Mouse
<b>Reactivity</b>	Human
<b>Form</b>	Liquid

Conjugation	PerCP
Purification	Protein G Purified
Isotype	IgG2b
Recommend Usage	ELISA (1:1000) Immunocytochemistry (1:50) Immunofluorescence (1:50) Western Blot (1:1000) The optimal working dilution should be determined by the end user.
Storage Buffer	In PBS, pH 7.4 (50% glycerol, 0.09% sodium azide).
Storage Instruction	Store at -20°C.
Note	This product contains sodium azide: a POISONOUS AND HAZARDOUS SUBSTANCE which should be handled by trained staff only.

## Applications

- Western Blot

- Immunocytochemistry

Immunocytochemical staining of HEK293 with 7-Ketocholesterol monoclonal antibody, clone 7E1 (Cat # MAB19303). (A, B) DAPI (blue) nuclear stain, (C, D) Phalloidin Alex Fluor 633 F-Actin stain, (E, F) 7-Ketocholesterol Antibody and (G, H) Composite. (A, C, E, G) Untreated and (B, D, F, H) Cells cultured overnight with 50  $\mu$ M H<sub>2</sub>O<sub>2</sub>.

- Immunofluorescence

- Enzyme-linked Immunoabsorbent Assay