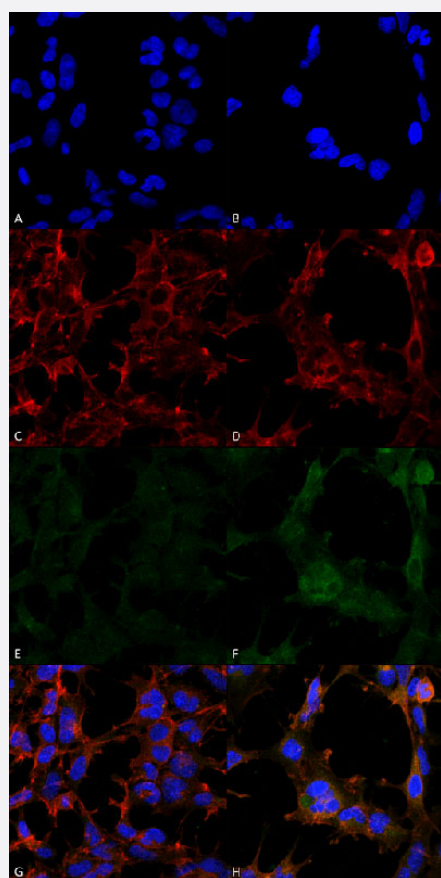


Hexanoyl-Lysine adduct monoclonal antibody, clone 5D9 (PerCP)

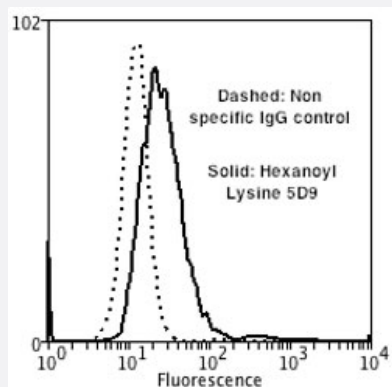
Catalog # MAB19267 Size 100 ug

Applications



Immunocytochemistry

Immunocytochemical staining of HEK293 with Hexanoyl-Lysine adduct monoclonal antibody, clone 5D9 (PerCP) (Cat # MAB19267). (A, B) DAPI (blue) nuclear stain. (C, D) Phalloidin Alex Fluor 633 F-Actin stain. (E, F) Hexanoyl-Lysine adduct Antibody. (G, H) Composite. (A,C,E,G) Untreated and (B,D,F,H) Cells cultured overnight with 50 uM H₂O₂.



Flow Cytometry

Flow cytometric analysis of SH-SY5Y with Hexanoyl-Lysine adduct monoclonal antibody, clone 5D9 (PerCP) (Cat # MAB19267).

Specification

Product Description	Mouse monoclonal antibody raised against synthetic Hexanoyl-Lysine adduct (HEL).
Immunogen	Synthetic Hexanoyl modified Keyhole Limpet Hemocyanin (KLH).
Host	Mouse
Form	Liquid
Conjugation	PerCP
Purification	Protein G purification
Isotype	IgG1
Recommend Usage	ELISA (1:1000) Flow Cytometry (1:50) Immunocytochemistry (1:50) Immunofluorescence (1:50) Western Blot (1:1000) The optimal working dilution should be determined by the end user.
Storage Buffer	In PBS, pH 7.4 (50% glycerol, 0.09% sodium azide).
Storage Instruction	Store at -20°C.
Note	This product contains sodium azide: a POISONOUS AND HAZARDOUS SUBSTANCE which should be handled by trained staff only.

Applications

- Western Blot

- Immunocytochemistry

Immunocytochemical staining of HEK293 with Hexanoyl-Lysine adduct monoclonal antibody, clone 5D9 (PerCP) (Cat # MAB19267). (A, B) DAPI (blue) nuclear stain. (C, D) Phalloidin Alex Fluor 633 F-Actin stain. (E, F) Hexanoyl-Lysine adduct Antibody. (G, H) Composite. (A,C,E,G) Untreated and (B,D,F,H) Cells cultured overnight with 50 uM H2O2.

- Immunofluorescence

- Enzyme-linked Immunoabsorbent Assay

- Flow Cytometry

Flow cytometric analysis of SH-SY5Y with Hexanoyl-Lysine adduct monoclonal antibody, clone 5D9 (PerCP) (Cat # MAB19267).