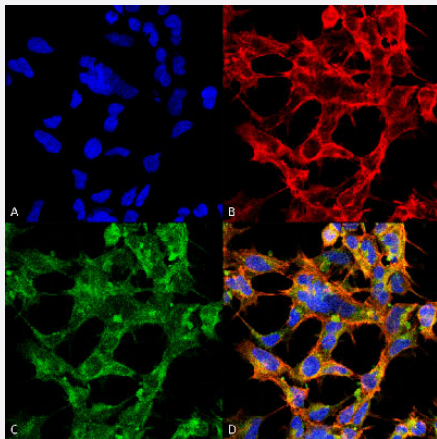


O-GlcNAc monoclonal antibody, clone 9H6 (ATTO 390)

Catalog # MAB19209 Size 100 ug

Applications



Immunocytochemistry

Immunocytochemical staining of HEK293 with O-GlcNAc monoclonal antibody, clone 9H6 (ATTO 390) (Cat # MAB19209). (A) DAPI (blue) nuclear stain. (B) Phalloidin Alex Fluor 633 F-Actin stain. (C) O-GlcNAc Antibody. (D) Composite.

Specification

Product Description	Mouse monoclonal antibody raised against synthetic peptide of O-GlcNAc.
Immunogen	Synthetic β -O-Linked N-Acetylglucosamine conjugated to Keyhole Limpet Hemocyanin (KLH).
Host	Mouse
Form	Liquid
Conjugation	ATTO 390
Purification	PEG precipitation
Isotype	IgM
Recommend Usage	ELISA (1:1000) Immunocytochemistry (1:50) Immunofluorescence (1:50) Western Blot (1:1000) The optimal working dilution should be determined by the end user.

Storage Buffer	In PBS, pH 7.4 (50% glycerol, 0.09% sodium azide).
Storage Instruction	Store at -20°C.
Note	This product contains sodium azide: a POISONOUS AND HAZARDOUS SUBSTANCE which should be handled by trained staff only.

Applications

- Western Blot

- Immunocytochemistry

Immunocytochemical staining of HEK293 with O-GlcNAc monoclonal antibody, clone 9H6 (ATTO 390) (Cat # MAB19209). (A) DAPI (blue) nuclear stain. (B) Phalloidin Alex Fluor 633 F-Actin stain. (C) O-GlcNAc Antibody. (D) Composite.

- Immunofluorescence

- Enzyme-linked Immunoabsorbent Assay