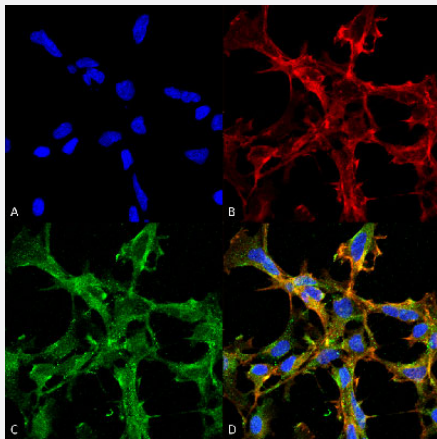


# Citrulline monoclonal antibody, clone 2D3.1 (ATTO 594)

Catalog # MAB19200      Size 100 ug

## Applications



### Immunocytochemistry

Immunocytochemical staining of HEK293 with Citrulline monoclonal antibody, clone 2D3.1 (ATTO 594) (Cat # MAB19200). (A) DAPI (blue) nuclear stain. (B) Phalloidin Alex Fluor 633 F-Actin stain. (C) Citrulline Antibody. (D) Composite.

## Specification

<b>Product Description</b>	Mouse monoclonal antibody raised against synthetic peptide of Citrulline.
<b>Immunogen</b>	Synthetic L-Citrulline conjugated to Keyhole Limpet Hemocyanin (KLH).
<b>Host</b>	Mouse
<b>Form</b>	Liquid
<b>Conjugation</b>	ATTO 594
<b>Purification</b>	Protein G purification
<b>Isotype</b>	IgG1
<b>Recommend Usage</b>	ELISA (1:1000) Immunocytochemistry (1:50) Immunofluorescence (1:50) Western Blot (1:1000) The optimal working dilution should be determined by the end user.

<b>Storage Buffer</b>	In PBS, pH 7.4 (50% glycerol, 0.09% sodium azide).
<b>Storage Instruction</b>	Store at -20°C.
<b>Note</b>	This product contains sodium azide: a POISONOUS AND HAZARDOUS SUBSTANCE which should be handled by trained staff only.

## Applications

- Western Blot

- Immunocytochemistry

Immunocytochemical staining of HEK293 with Citrulline monoclonal antibody, clone 2D3.1 (ATTO 594) (Cat # MAB19200). (A) DAPI (blue) nuclear stain. (B) Phalloidin Alex Fluor 633 F-Actin stain. (C) Citrulline Antibody. (D) Composite.

- Immunofluorescence

- Enzyme-linked Immunoabsorbent Assay