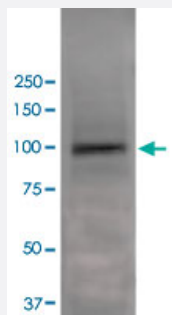


Npas4 monoclonal antibody, clone S408-79 (ATTO 594)

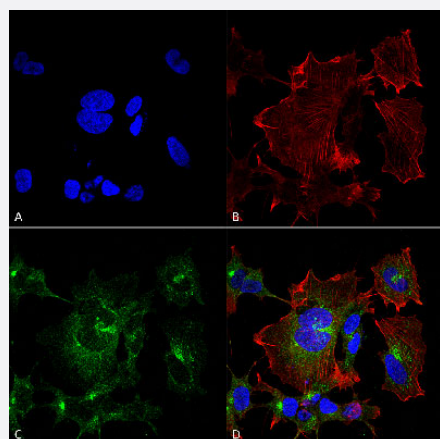
Catalog # MAB19188 Size 100 ug

Applications



Western Blot (Tissue lysate)

Western Blot analysis of rat brain with Npas4 monoclonal antibody, clone S408-79 (ATTO 594) (Cat # MAB19188).



Immunocytochemistry

Immunocytochemical staining of SK-N-BE with Npas4 monoclonal antibody, clone S408-79 (ATTO 594) (Cat # MAB19188). (A) DAPI (blue) nuclear stain. (B) Phalloidin Texas Red F-Actin stain. (C) Npas4 Antibody. (D) Composite.

Specification

Product Description	Mouse monoclonal antibody raised against partial recombinant rat Npas4.
Immunogen	Recombinant protein corresponding to amino acids 597-802 at C-terminus of rat Npas4.
Host	Mouse
Reactivity	Rat
Form	Liquid

Conjugation	ATTO 594
Purification	Protein G purification
Isotype	IgG1
Recommend Usage	Immunocytochemistry (1:100) Immunofluorescence (1:100) Immunohistochemistry (Formalin/PFA-fixed paraffin-embedded sections) Western Blot (1:1000) The optimal working dilution should be determined by the end user.
Storage Buffer	In PBS, pH 7.4 (50% glycerol, 0.09% sodium azide).
Storage Instruction	Store at -20°C.
Note	This product contains sodium azide: a POISONOUS AND HAZARDOUS SUBSTANCE which should be handled by trained staff only.

Applications

- Western Blot (Tissue lysate)

Western Blot analysis of rat brain with Npas4 monoclonal antibody, clone S408-79 (ATTO 594) (Cat # MAB19188).

- Immunohistochemistry (Formalin/PFA-fixed paraffin-embedded sections)

- Immunocytochemistry

Immunocytochemical staining of SK-N-BE with Npas4 monoclonal antibody, clone S408-79 (ATTO 594) (Cat # MAB19188). (A) DAPI (blue) nuclear stain. (B) Phalloidin Texas Red F-Actin stain. (C) Npas4 Antibody. (D) Composite.

- Immunofluorescence

Gene Info — Npas4

Entrez GeneID	266734
Protein Accession#	Q8CJH6
Gene Name	Npas4
Gene Alias	Nxf
Gene Description	neuronal PAS domain protein 4

Gene Ontology[Hyperlink](#)**Other Designations**

bHLH PAS type transcription factor NXF|bHLH-PAS type transcription factor NXF