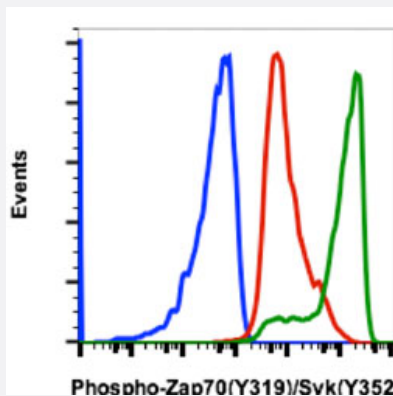


ZAP70/SYK (phospho Y319/Y352) monoclonal antibody, clone A3

Catalog # MAB19166 Size 20 uL

Applications



Flow Cytometry

Flow cytometric analysis of Jurkat cells with ZAP70/SYK (phospho Y319/Y352) monoclonal antibody, clone A3 (Cat # MAB19166). Secondary antibody only negative control (blue) or untreated (red) or treated with pervanadate (green).

Specification

Product Description	Rabbit monoclonal antibody raised against synthetic phosphopeptide of human ZAP70/SYK.
Immunogen	A synthetic phosphopeptide corresponding to residues surrounding Y319/Y352 of human ZAP70/SYK.
Host	Rabbit
Reactivity	Human, Mouse
Form	Liquid
Purification	Protein A/G purification
Isotype	IgG1, kappa
Recommend Usage	Flow Cytometry The optimal working dilution should be determined by the end user.
Storage Buffer	In PBS, pH 7.4 (50% glycerol, 0.1% BSA and 0.02% sodium azide).
Storage Instruction	Store at -20°C.

Note

This product contains sodium azide: a POISONOUS AND HAZARDOUS SUBSTANCE which should be handled by trained staff only.

Applications

- Flow Cytometry

Flow cytometric analysis of Jurkat cells with ZAP70/SYK (phospho Y319/Y352) monoclonal antibody, clone A3 (Cat # MAB19166). Secondary antibody only negative control (blue) or untreated (red) or treated with pervanadate (green).

Gene Info — SYK

Entrez GeneID	6850
Gene Name	SYK
Gene Alias	DKFZp313N1010, FLJ25043, FLJ37489
Gene Description	spleen tyrosine kinase
Omim ID	600085
Gene Ontology	Hyperlink
Other Designations	OTTHUMP000000021627 OTTHUMP000000021628

Gene Info — ZAP70

Entrez GeneID	7535
Gene Name	ZAP70
Gene Alias	FLJ17670, FLJ17679, SRK, STD, TZK, ZAP-70
Gene Description	zeta-chain (TCR) associated protein kinase 70kDa
Omim ID	176947
Gene Ontology	Hyperlink

Gene Summary

This gene encodes an enzyme belonging to the protein tyrosine kinase family, and it plays a role in T-cell development and lymphocyte activation. This enzyme, which is phosphorylated on tyrosine residues upon T-cell antigen receptor (TCR) stimulation, functions in the initial step of TCR-mediated signal transduction in combination with the Src family kinases, Lck and Fyn. This enzyme is also essential for thymocyte development. Mutations in this gene cause selective T-cell defect, a severe combined immunodeficiency disease characterized by a selective absence of CD8-positive T-cells. Two transcript variants that encode different isoforms have been found for this gene. [provided by RefSeq]

Other Designations

syk-related tyrosine kinase|zeta-chain (TCR) associated protein kinase (70 kD)|zeta-chain associated protein kinase 70kDa|zeta-chain associated protein kinase, 70kD

Pathway

- [B cell receptor signaling pathway](#)
- [Fc epsilon RI signaling pathway](#)
- [Fc gamma R-mediated phagocytosis](#)
- [Natural killer cell mediated cytotoxicity](#)
- [Natural killer cell mediated cytotoxicity](#)
- [Primary immunodeficiency](#)
- [T cell receptor signaling pathway](#)

Disease

- [HIV Infections](#)
- [Lymphedema](#)
- [Lymphoproliferative Disorders](#)
- [Myelodysplastic Syndromes](#)
- [Tobacco Use Disorder](#)