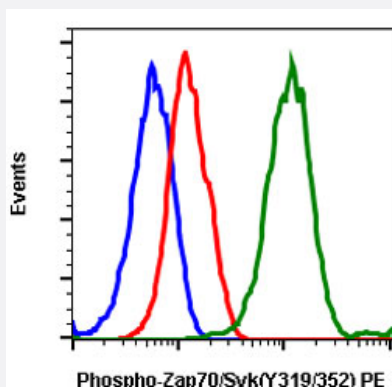


ZAP70/SYK (phospho Y319/Y352) monoclonal antibody, clone A3 (PE)

Catalog # MAB19162 Size 10 Reactions

Applications



Flow Cytometry

Flow cytometric analysis of Jurkat cells with ZAP70/SYK (phospho Y319/Y352) monoclonal antibody, clone A3 (PE) (Cat # MAB19162). Unstained untreated cells as negative control (blue) or stained and untreated (red) or stained and treated with pervanadate (green).

Specification

Product Description	Rabbit monoclonal antibody raised against synthetic phosphopeptide of human ZAP70/SYK.
Immunogen	A synthetic phosphopeptide corresponding to residues surrounding Y319/Y352 of human ZAP70/SYK.
Host	Rabbit
Reactivity	Human, Mouse
Form	Liquid
Conjugation	PE
Purification	Protein A/G purification
Isotype	IgG1, kappa
Recommend Usage	Flow Cytometry (5 μ L/ 10^6 cells) The optimal working dilution should be determined by the end user.

Storage Buffer	In PBS, pH 7.4 (0.2% BSA, 0.09% sodium azide).
Storage Instruction	Store at 4°C.
Note	This product contains sodium azide: a POISONOUS AND HAZARDOUS SUBSTANCE which should be handled by trained staff only.

Applications

- Flow Cytometry

Flow cytometric analysis of Jurkat cells with ZAP70/SYK (phospho Y319/Y352) monoclonal antibody, clone A3 (PE) (Cat # MAB19162). Unstained untreated cells as negative control (blue) or stained and untreated (red) or stained and treated with pervanadate (green).

Gene Info — SYK

Entrez GeneID	6850
Gene Name	SYK
Gene Alias	DKFZp313N1010, FLJ25043, FLJ37489
Gene Description	spleen tyrosine kinase
Omim ID	600085
Gene Ontology	Hyperlink
Other Designations	OTTHUMP00000021627 OTTHUMP00000021628

Gene Info — ZAP70

Entrez GeneID	7535
Gene Name	ZAP70
Gene Alias	FLJ17670, FLJ17679, SRK, STD, TZK, ZAP-70
Gene Description	zeta-chain (TCR) associated protein kinase 70kDa
Omim ID	176947
Gene Ontology	Hyperlink

Gene Summary

This gene encodes an enzyme belonging to the protein tyrosine kinase family, and it plays a role in T-cell development and lymphocyte activation. This enzyme, which is phosphorylated on tyrosine residues upon T-cell antigen receptor (TCR) stimulation, functions in the initial step of TCR-mediated signal transduction in combination with the Src family kinases, Lck and Fyn. This enzyme is also essential for thymocyte development. Mutations in this gene cause selective T-cell defect, a severe combined immunodeficiency disease characterized by a selective absence of CD8-positive T-cells. Two transcript variants that encode different isoforms have been found for this gene. [provided by RefSeq]

Other Designations

syk-related tyrosine kinase|zeta-chain (TCR) associated protein kinase (70 kD)|zeta-chain associated protein kinase 70kDa|zeta-chain associated protein kinase, 70kD

Pathway

- [B cell receptor signaling pathway](#)
- [Fc epsilon RI signaling pathway](#)
- [Fc gamma R-mediated phagocytosis](#)
- [Natural killer cell mediated cytotoxicity](#)
- [Natural killer cell mediated cytotoxicity](#)
- [Primary immunodeficiency](#)
- [T cell receptor signaling pathway](#)

Disease

- [HIV Infections](#)
- [Lymphedema](#)
- [Lymphoproliferative Disorders](#)
- [Myelodysplastic Syndromes](#)
- [Tobacco Use Disorder](#)