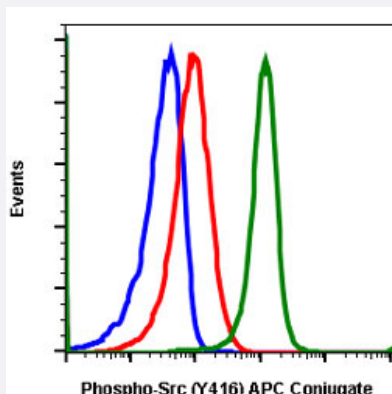


# SRC (phospho Y416) monoclonal antibody, clone C4 (APC)

Catalog # MAB19100      Size 10 Reactions

## Applications



### Flow Cytometry

Flow cytometric analysis of U937 cells unstained untreated cells as negative control (blue) or stained untreated (red) or treated with IFNA IL4 and pervanadate (green) using SRC (phospho Y416) monoclonal antibody (APC).

## Specification

<b>Product Description</b>	Rabbit monoclonal antibody raised against synthetic phosphopeptide of human SRC.
<b>Immunogen</b>	A synthetic phosphopeptide corresponding to residues surrounding Tyr416 of human phospho SRC.
<b>Host</b>	Rabbit
<b>Reactivity</b>	Human, Mouse
<b>Form</b>	Liquid
<b>Conjugation</b>	APC
<b>Purification</b>	Protein A/G purification
<b>Isotype</b>	IgG1k
<b>Recommend Usage</b>	Flow Cytometry (5 $\mu$ L/ $10^6$ cells or 5 $\mu$ per 100 $\mu$ L) The optimal working dilution should be determined by the end user.
<b>Storage Buffer</b>	In PBS, pH 7.4 (0.2% BSA, 0.09% sodium azide).

## Storage Instruction

Store at 4°C.

## Note

This product contains sodium azide: a POISONOUS AND HAZARDOUS SUBSTANCE which should be handled by trained staff only.

## Applications

- Flow Cytometry

Flow cytometric analysis of U937 cells unstained untreated cells as negative control (blue) or stained untreated (red) or treated with IFNA IL4 and pervanadate (green) using SRC (phospho Y416) monoclonal antibody (APC).

## Gene Info — SRC

## Entrez GeneID

[6714](#)

## Protein Accession#

[P12931](#)

## Gene Name

SRC

## Gene Alias

ASV, SRC1, c-SRC, p60-Src

## Gene Description

v-src sarcoma (Schmidt-Ruppin A-2) viral oncogene homolog (avian)

## Omim ID

[190090](#)

## Gene Ontology

[Hyperlink](#)

## Gene Summary

This gene is highly similar to the v-src gene of Rous sarcoma virus. This proto-oncogene may play a role in the regulation of embryonic development and cell growth. The protein encoded by this gene is a tyrosine-protein kinase whose activity can be inhibited by phosphorylation by c-SRC kinase. Mutations in this gene could be involved in the malignant progression of colon cancer. Two transcript variants encoding the same protein have been found for this gene. [provided by RefSeq]

## Other Designations

OTTHUMP00000174476|OTTHUMP00000174477|proto-oncogene tyrosine-protein kinase SRC|protooncogene SRC, Rous sarcoma|tyrosine kinase pp60c-src|tyrosine-protein kinase SRC-1

## Pathway

- [Adherens junction](#)
- [Endocytosis](#)
- [Epithelial cell signaling in Helicobacter pylori infection](#)

- [ErbB signaling pathway](#)
- [Focal adhesion](#)
- [Gap junction](#)
- [GnRH signaling pathway](#)
- [Tight junction](#)
- [VEGF signaling pathway](#)

## Disease

- [Genetic Predisposition to Disease](#)
- [HIV Infections](#)
- [Thyroid Neoplasms](#)