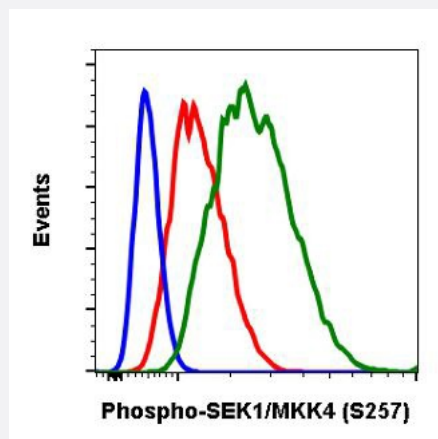


MAP2K4 (phospho S257) monoclonal antibody, clone C5

Catalog # MAB19066 Size 20 uL

Applications



Flow Cytometry

Flow cytometric analysis of 3T3 cells secondary antibody only negative control (blue) or treated with imatinib (red) or with pervanadate (green) using MAP2K4 (phospho S257) monoclonal antibody.

Specification

Product Description	Rabbit monoclonal antibody raised against synthetic phosphopeptide of human MAP2K4.
Immunogen	A synthetic phosphopeptide corresponding to residues surrounding S257 of human MAP2K4.
Host	Rabbit
Reactivity	Human, Mouse
Form	Liquid
Purification	Protein A/G Purification
Isotype	IgG1k
Recommend Usage	Flow Cytometry (1 ug/mL - 0.001 ug/mL) The optimal working dilution should be determined by the end user.
Storage Buffer	In PBS, pH 7.4 (50% glycerol, 0.02% sodium azide, 0.1% BSA).
Storage Instruction	Store at -20°C.

Note

This product contains sodium azide: a POISONOUS AND HAZARDOUS SUBSTANCE which should be handled by trained staff only.

Applications

- Flow Cytometry

Flow cytometric analysis of 3T3 cells secondary antibody only negative control (blue) or treated with imatinib (red) or with pervanadate (green) using MAP2K4 (phospho S257) monoclonal antibody.

Gene Info — MAP2K4

Entrez GeneID [6416](#)

Gene Name MAP2K4

Gene Alias JNKK, JNKK1, MAPKK4, MEK4, MKK4, PRKMK4, SEK1, SERK1

Gene Description mitogen-activated protein kinase kinase 4

Omim ID [601335](#)

Gene Ontology [Hyperlink](#)

Gene Summary This gene encodes a dual specificity protein kinase that belongs to the Ser/Thr protein kinase family. This kinase is a direct activator of MAP kinases in response to various environmental stresses or mitogenic stimuli. It has been shown to activate MAPK8/JNK1, MAPK9/JNK2, and MAPK14/p38, but not MAPK1/ERK2 or MAPK3/ERK3. This kinase is phosphorylated, and thus activated by MAP3K1/MEKK. The knockout studies in mice suggested the roles of this kinase in mediating survival signal in T cell development, as well as in the organogenesis of liver. [provided by RefSeq]

Other Designations JNK activating kinase 1|JNK-activated kinase 1|MAP kinase kinase 4|MAPK/ERK kinase 4|SAPK/ERK kinase 1|c-Jun N-terminal kinase kinase 1|dual specificity mitogen-activated protein kinase kinase 4

Pathway

- [Epithelial cell signaling in Helicobacter pylori infection](#)
- [ErbB signaling pathway](#)
- [Fc epsilon RI signaling pathway](#)
- [GnRH signaling pathway](#)

- [MAPK signaling pathway](#)
- [Toll-like receptor signaling pathway](#)

Disease

- [Colorectal Neoplasms](#)
- [Genetic Predisposition to Disease](#)
- [Lung Neoplasms](#)
- [Pancreatic cancer](#)
- [Pancreatic Neoplasms](#)