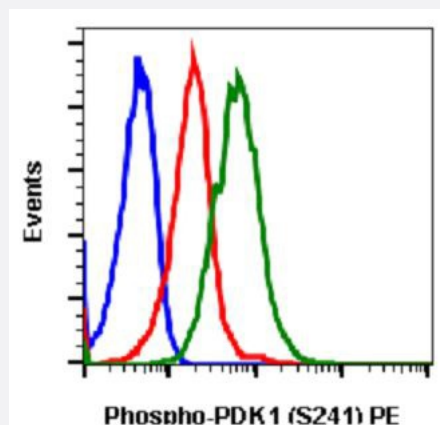


PDPK1 (phospho S241) monoclonal antibody, clone F7 (PE)

Catalog # MAB19006 Size 10 Reactions

Applications



Flow Cytometry

Flow cytometric analysis of 293T cells unstained K252a treated cells (blue) or stained treated with K252a (red) or with pervanadate (green) using PDPK1 (phospho S241) monoclonal antibody (PE).

Specification

Product Description	Rabbit monoclonal antibody raised against synthetic phosphopeptide of human PDPK1.
Immunogen	A synthetic phosphopeptide corresponding to residues surrounding S241 of human PDPK1.
Host	Rabbit
Reactivity	Human
Form	Liquid
Conjugation	PE
Purification	Protein A/G Purification
Isotype	IgG1k
Recommend Usage	Flow Cytometry (5 μ L/ 10^6 cells or 0.05 μ g/mL) The optimal working dilution should be determined by the end user.
Storage Buffer	In PBS, pH 7.4 (0.2% BSA, 0.09% sodium azide).

Storage Instruction

Store at 2-8°C.

Note

This product contains sodium azide: a POISONOUS AND HAZARDOUS SUBSTANCE which should be handled by trained staff only.

Applications

- Flow Cytometry

Flow cytometric analysis of 293T cells unstained K252a treated cells (blue) or stained treated with K252a (red) or with pervanadate (green) using PDPK1 (phospho S241) monoclonal antibody (PE).

Gene Info — PDPK1

Entrez GeneID[5170](#)**Gene Name**

PDPK1

Gene Alias

MGC20087, MGC35290, PDK1, PRO0461

Gene Description

3-phosphoinositide dependent protein kinase-1

Omim ID[605213](#)**Gene Ontology**[Hyperlink](#)**Other Designations**

Pkb kinase like gene 1|Pkb-like 1|protein kinase

Pathway

- [Endometrial cancer](#)
- [Focal adhesion](#)
- [Insulin signaling pathway](#)
- [mTOR signaling pathway](#)
- [Non-small cell lung cancer](#)
- [PPAR signaling pathway](#)
- [Prostate cancer](#)

Disease

- [Adenocarcinoma](#)
- [Thyroid Neoplasms](#)