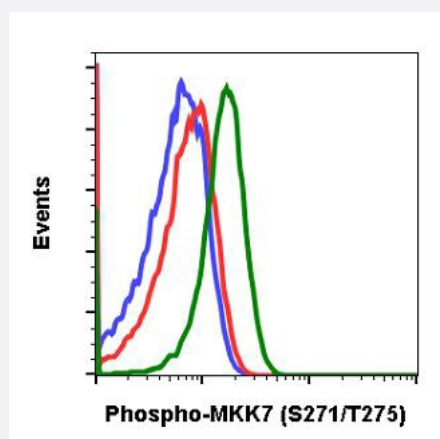


# MAP2K7 (phospho S271/T275) monoclonal antibody, clone R4F9

Catalog # MAB18965      Size 200 uL

## Applications



### Flow Cytometry

Flow cytometric analysis of C6 cells secondary antibody only negative control (blue) or untreated (red) or treated with EGF (green) using MAP2K7 (phospho S271/T275) monoclonal antibody.

## Specification

|                            |  |
|----------------------------|--|
| <b>Product Description</b> | Rabbit monoclonal antibody raised against synthetic phosphopeptide of human MAP2K7.                          |
| <b>Immunogen</b>           | A synthetic phosphopeptide corresponding to residues surrounding S271/T275 of human MAP2K7.                  |
| <b>Host</b>                | Rabbit   |
| <b>Reactivity</b>          | Human, Rat   |
| <b>Form</b>                | Liquid   |
| <b>Purification</b>        | Protein A/G Purification   |
| <b>Isotype</b>             | IgG1k  |
| <b>Recommend Usage</b>     | Flow Cytometry (1 ug/mL - 0.001 ug/mL)<br>The optimal working dilution should be determined by the end user. |
| <b>Storage Buffer</b>      | In PBS, pH 7.4 (50% glycerol, 0.02% sodium azide, 0.1% BSA).   |
| <b>Storage Instruction</b> | Store at -20°C.  |

**Note**

This product contains sodium azide: a POISONOUS AND HAZARDOUS SUBSTANCE which should be handled by trained staff only.

## Applications

- Flow Cytometry

Flow cytometric analysis of C6 cells secondary antibody only negative control (blue) or untreated (red) or treated with EGF (green) using MAP2K7 (phospho S271/T275) monoclonal antibody.

## Gene Info — MAP2K7

Entrez GeneID [5609](#)

Gene Name MAP2K7

Gene Alias Jnkk2, MAPKK7, MKK7, PRKMK7

Gene Description mitogen-activated protein kinase kinase 7

Omim ID [603014](#)

Gene Ontology [Hyperlink](#)

**Gene Summary** The protein encoded by this gene is a dual specificity protein kinase that belongs to the MAP kinase kinase family. This kinase specifically activates MAPK8/JNK1 and MAPK9/JNK2, and this kinase itself is phosphorylated and activated by MAP kinase kinase kinases including MAP3K1/MEKK1, MAP3K2/MEKK2, MAP3K3/MEKK5, and MAP4K2/GCK. This kinase is involved in the signal transduction mediating the cell responses to proinflammatory cytokines, and environmental stresses. Multiple alternatively spliced transcript variants encoding distinct isoforms have been found, but only one transcript variant has been supported and defined. [provided by RefSeq]

**Other Designations** JNK kinase 2|JNK-activating kinase 2|MAP kinase kinase 7|OTTHUMP00000174397|c-Jun N-terminal kinase kinase 2|dual specificity mitogen-activated protein kinase kinase 7

## Pathway

- [ErbB signaling pathway](#)
- [Fc epsilon RI signaling pathway](#)
- [GnRH signaling pathway](#)
- [MAPK signaling pathway](#)

- [Neurotrophin signaling pathway](#)
- [T cell receptor signaling pathway](#)
- [Toll-like receptor signaling pathway](#)