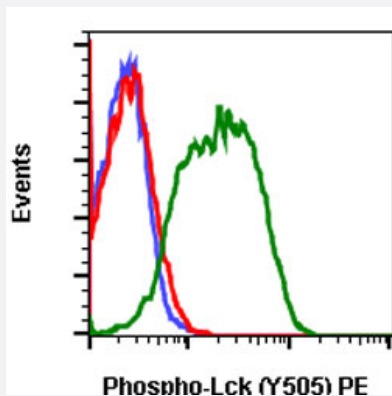


# LCK (phospho Y505) monoclonal antibody, clone A3 (PE)

Catalog # MAB18927      Size 100 Reactions

## Applications



### Flow Cytometry

Flow cytometric analysis of Daudi cells with LCK (phospho Y505) monoclonal antibody, clone A3 (PE) (Cat # MAB18927). Unstained and untreated cells as negative control (blue) or stained untreated (red) or treated with IFN $\alpha$  plus IL4 (green).

## Specification

<b>Product Description</b>	Rabbit monoclonal antibody raised against synthetic phosphopeptide of human LCK.
<b>Immunogen</b>	A synthetic phosphopeptide corresponding to residues surrounding Y505 of human LCK.
<b>Host</b>	Rabbit
<b>Reactivity</b>	Human
<b>Form</b>	Liquid
<b>Conjugation</b>	PE
<b>Purification</b>	Protein A/G purification
<b>Isotype</b>	IgG1, kappa
<b>Recommend Usage</b>	Flow Cytometry (5 $\mu$ L/ $10^6$ cells) The optimal working dilution should be determined by the end user.
<b>Storage Buffer</b>	In PBS, pH 7.4 (0.2% BSA, 0.09% sodium azide).

## Storage Instruction

Store at 4°C.

## Note

This product contains sodium azide: a POISONOUS AND HAZARDOUS SUBSTANCE which should be handled by trained staff only.

## Applications

- Flow Cytometry

Flow cytometric analysis of Daudi cells with LCK (phospho Y505) monoclonal antibody, clone A3 (PE) (Cat # MAB18927). Unstained and untreated cells as negative control (blue) or stained untreated (red) or treated with IFN $\alpha$  plus IL4 (green).

## Gene Info — LCK

## Entrez GeneID

[3932](#)

## Gene Name

LCK

## Gene Alias

YT16, p56lck, pp58lck

## Gene Description

lymphocyte-specific protein tyrosine kinase

## Omim ID

[153390](#)

## Gene Ontology

[Hyperlink](#)

## Gene Summary

This gene is a member of the Src family of protein tyrosine kinases (PTKs). The encoded protein is a key signaling molecule in the selection and maturation of developing T-cells. It contains N-terminal sites for myristylation and palmitoylation, a PTK domain, and SH2 and SH3 domains which are involved in mediating protein-protein interactions with phosphotyrosine-containing and proline-rich motifs, respectively. The protein localizes to the plasma membrane and pericentrosomal vesicles, and binds to cell surface receptors, including CD4 and CD8, and other signaling molecules. Multiple alternatively spliced variants, encoding the same protein, have been described. [provided by RefSeq]

## Other Designations

T-lymphocyte specific protein tyrosine kinase p56lck|p56(LSTRA) protein-tyrosine kinase|protein tyrosine kinase|proto-oncogene tyrosine-protein kinase LCK

## Pathway

- [Natural killer cell mediated cytotoxicity](#)
- [Primary immunodeficiency](#)
- [T cell receptor signaling pathway](#)

## Disease

- [HIV Infections](#)
- [Tobacco Use Disorder](#)