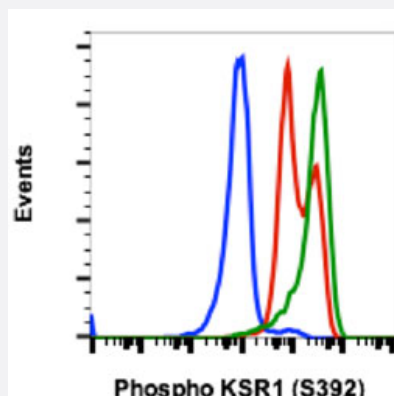


# KSR1 (phospho S392) monoclonal antibody, clone 3A4

Catalog # MAB18922      Size 20 uL

## Applications



### Flow Cytometry

Flow cytometric analysis of K562 cells with KSR1 (phospho S392) monoclonal antibody, clone 3A4 (Cat # MAB18922). Secondary antibody only negative control (blue) or treated with imatinib (red) or treated with PV (green).

## Specification

<b>Product Description</b>	Rabbit monoclonal antibody raised against synthetic phosphopeptide of human KSR1.
<b>Immunogen</b>	A synthetic phosphopeptide corresponding to residues surrounding S392 of human KSR1.
<b>Host</b>	Rabbit
<b>Reactivity</b>	Human, Mouse
<b>Form</b>	Liquid
<b>Purification</b>	Protein A/G purification
<b>Isotype</b>	IgG1, kappa
<b>Recommend Usage</b>	Flow Cytometry The optimal working dilution should be determined by the end user.
<b>Storage Buffer</b>	In PBS, pH 7.4 (50% glycerol, 0.1% BSA and 0.02% sodium azide).
<b>Storage Instruction</b>	Store at -20°C.

**Note**

This product contains sodium azide: a POISONOUS AND HAZARDOUS SUBSTANCE which should be handled by trained staff only.

## Applications

- Flow Cytometry

Flow cytometric analysis of K562 cells with KSR1 (phospho S392) monoclonal antibody, clone 3A4 (Cat # MAB18922).  
Secondary antibody only negative control (blue) or treated with imatinib (red) or treated with PV (green).

## Gene Info — KSR1

Entrez GeneID	<a href="#">8844</a>
---------------	----------------------

Gene Name	KSR1
-----------	------

Gene Alias	KSR, RSU2
------------	-----------

Gene Description	kinase suppressor of ras 1
------------------	----------------------------

Omim ID	<a href="#">601132</a>
---------	------------------------

Gene Ontology	<a href="#">Hyperlink</a>
---------------	---------------------------

Other Designations	kinase suppressor of ras
--------------------	--------------------------

## Disease

- [Tobacco Use Disorder](#)